

AKAP8L RABBIT PAB

货号: S219946

产品全名: AKAP8L 兔多抗

基因符号 HA95, HAP95, NAKAP, NAKAP95

UNIPROT ID: Q9ULX6 (Gene Accession - NP_055186)

背景: A-kinase anchor protein 8-like is an enzyme that in humans is encoded by the AKAP8L gene. AKAP8L has been shown to interact with Thymopoietin[4][5] and DHX9. Could play a role in constitutive transport element (CTE)-mediated gene expression. Does not seem to be implicated in the binding of regulatory subunit II of PKA. May be involved in nuclear envelope breakdown and chromatin condensation. May regulate the initiation phase of DNA replication when associated with TMPO-beta.

抗原: Synthetic peptide of human AKAP8L

经过测试的应用: ELISA, WB, IHC

推荐稀释比: IHC: 25-100;WB: 500-2000;ELISA: 2000-5000

种属反应性: Rabbit

克隆性: Rabbit Polyclonal

亚型: Immunogen-specific rabbit IgG

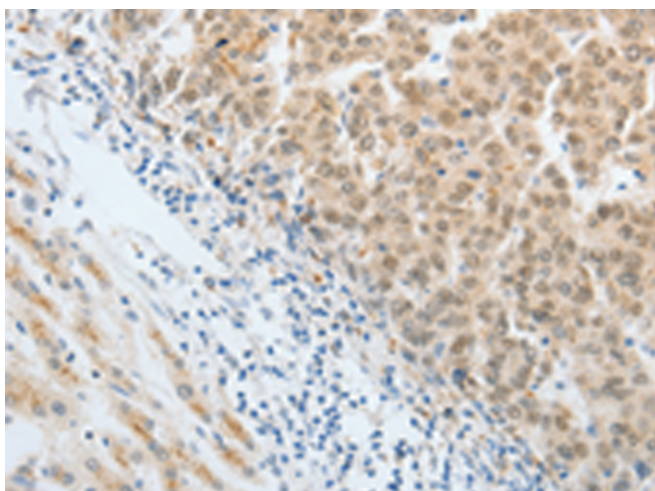
纯化: Antigen affinity purification

种属反应性: Human, Mouse

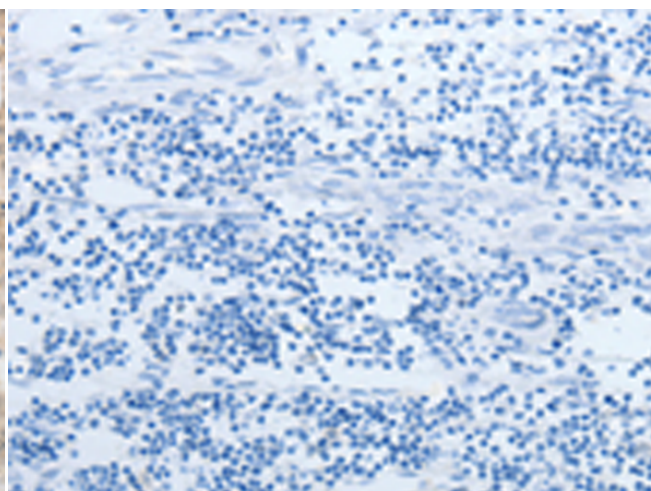
成分: PBS (without Mg²⁺ and Ca²⁺), pH 7.4, 150 mM NaCl, 0.05% Sodium Azide and 40% glycerol

研究领域: Epigenetics and Nuclear Signaling

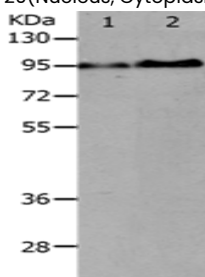
储存和运输: Store at -20°C. Avoid repeated freezing and thawing



Immunohistochemistry analysis of paraffin embedded Human liver cancer tissue using 219946 (AKAP8L Antibody) at a dilution of 1/20 (Nucleus, Cytoplasm).



In comparison with the IHC on the left, the same paraffin-embedded Human liver cancer tissue is first treated with the synthetic peptide and then with 219946 (Anti-AKAP8L Antibody) at dilution 1/20.



Gel: 10%SDS-PAGE, Lysate: 40 µg;
Lane 1-2: Hela cells, mouse brain tissue;
Primary antibody: 219946 (AKAP8L Antibody) at dilution 1/250;
Secondary antibody: Goat anti rabbit IgG at 1/8000 dilution;
Exposure time: 2 minutes