

## AKAP8 RABBIT PAB

货号: S219945

产品全名: AKAP8 兔多抗

基因符号 AKAP-8, AKAP95, AKAP 95, AKAP-95

**UNIPROT ID:** O43823 (Gene Accession - NP\_005849)

**背景:** This gene encodes a member of the A-kinase anchor protein family. A-kinase anchor proteins are scaffold proteins that contain a binding domain for the RI/RII subunit of protein kinase A (PKA) and recruit PKA and other signaling molecules to specific subcellular locations. This gene encodes a nuclear A-kinase anchor protein that binds to the RII alpha subunit of PKA and may play a role in chromosome condensation during mitosis by targeting PKA and the condensin complex to chromatin. A pseudogene of this gene is located on the short arm of chromosome 9.

**抗原:** Synthetic peptide of human AKAP8

**经过测试的应用:** ELISA, WB, IHC

**推荐稀释比:** IHC: 25-100;WB: 500-2000;ELISA: 2000-5000

**种属反应性:** Rabbit

**克隆性:** Rabbit Polyclonal

**亚型:** Immunogen-specific rabbit IgG

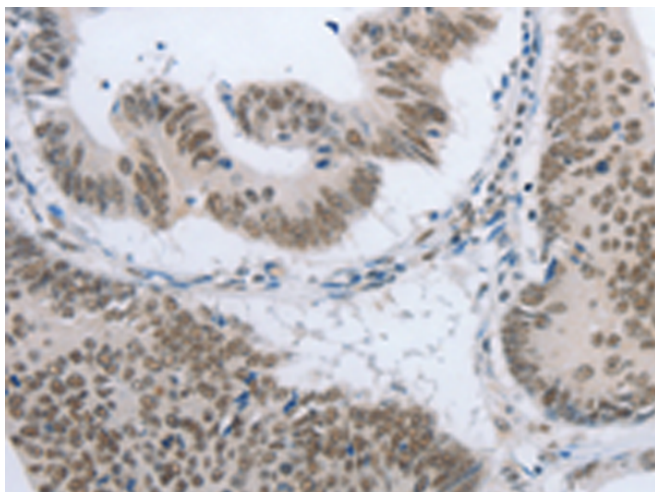
**纯化:** Antigen affinity purification

**种属反应性:** Human

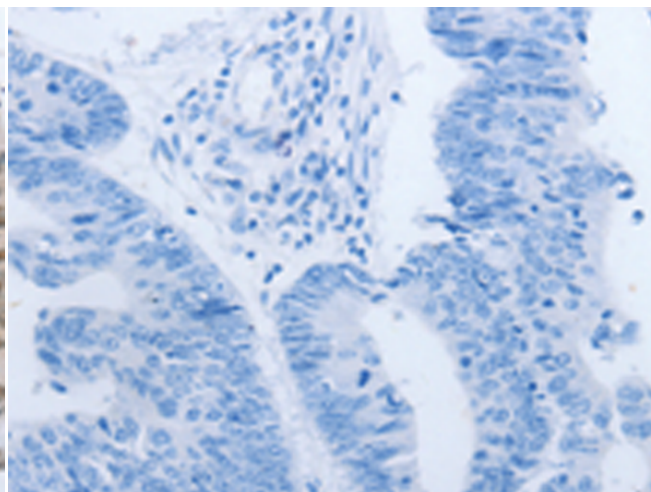
**成分:** PBS (without Mg<sup>2+</sup> and Ca<sup>2+</sup>), pH 7.4, 150 mM NaCl, 0.05% Sodium Azide and 40% glycerol

**研究领域:** Cancer

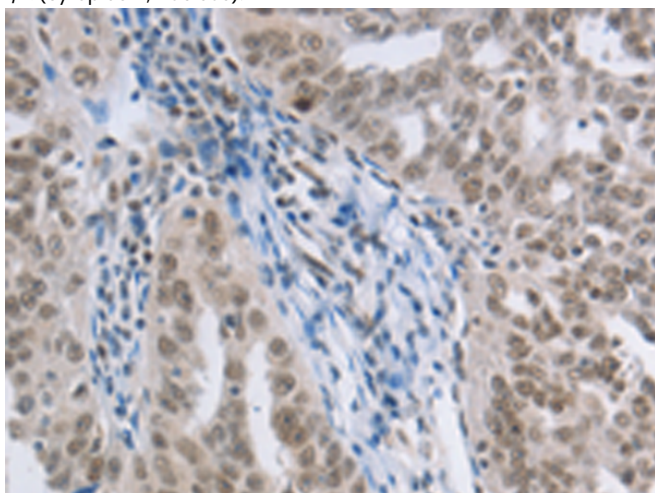
**储存和运输:** Store at -20°C. Avoid repeated freezing and thawing



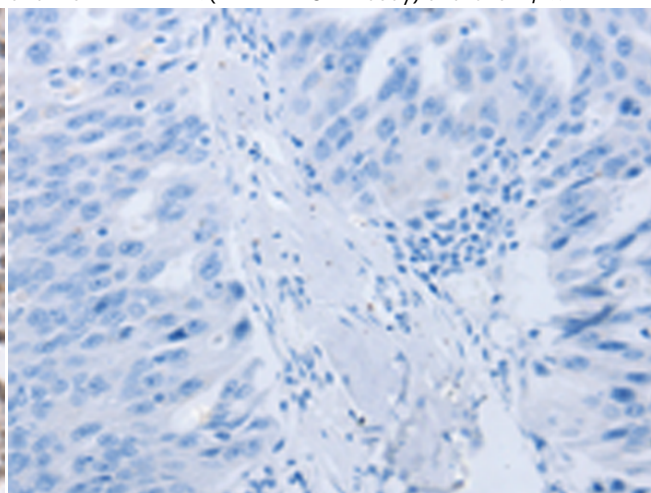
Immunohistochemistry analysis of paraffin embedded Human colon cancer tissue using 219945(AKAP8 Antibody) at a dilution of 1/15(cytoplasm, Nucleus).



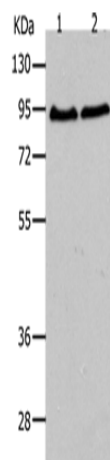
In comparison with the IHC on the left, the same paraffin-embedded Human colon cancer tissue is first treated with the synthetic peptide and then with 219945(Anti-AKAP8 Antibody) at dilution 1/15.



The image on the left is immunohistochemistry of paraffin-embedded Human ovarian cancer tissue using 219945(Anti-AKAP8 Antibody) at a dilution of 1/15.



In comparison with the IHC on the left, the same paraffin-embedded Human ovarian cancer tissue is first treated with synthetic peptide and then with D260664(Anti-AKAP8 Antibody) at dilution 1/15.



Gel: 10%SDS-PAGE, Lysate: 40 µg;  
Lane 1-2: HeLa cells, 293T cells;  
Primary antibody: 219945(AKAP8 Antibody) at dilution 1/250;  
Secondary antibody: Goat anti rabbit IgG at 1/8000 dilution;  
Exposure time: 2 minutes



# Product Description

Pioneering GTPase and Oncogene Product Development since 2010

---