

## AIP RABBIT PAB

货号: S220300

产品全名: AIP 兔多抗

基因符号: ARA9; XAP2; XAP-2; FKBP16; FKBP37; SMTPHN

**UNIPROT ID:** O00170 (Gene Accession - NP\_003968)

**背景:** The protein encoded by this gene is a receptor for aryl hydrocarbons and a ligand-activated transcription factor. The encoded protein is found in the cytoplasm as part of a multiprotein complex, but upon binding of ligand is transported to the nucleus. This protein can regulate the expression of many xenobiotic metabolizing enzymes. Also, the encoded protein can bind specifically to and inhibit the activity of hepatitis B virus.

**抗原:** Synthetic peptide of human AIP

**经过测试的应用:** ELISA, IHC

**推荐稀释比:** IHC: 100-300; ELISA: 2000-10000

**种属反应性:** Rabbit

**克隆性:** Rabbit Polyclonal

**亚型:** Immunogen-specific rabbit IgG

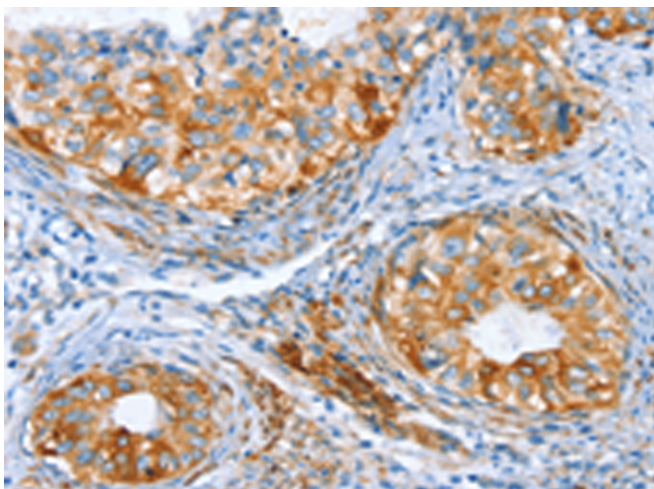
**纯化:** Antigen affinity purification

**种属反应性:** Human, Mouse, Rat

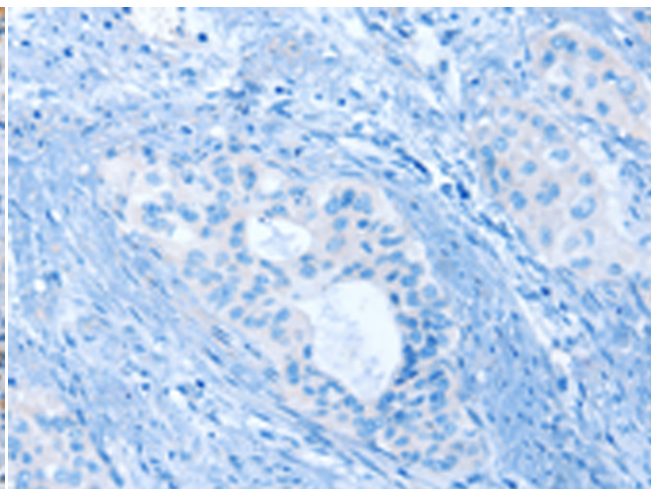
**成分:** PBS (without Mg<sup>2+</sup> and Ca<sup>2+</sup>), pH 7.4, 150 mM NaCl, 0.05% Sodium Azide and 40% glycerol

**研究领域:** Neuroscience

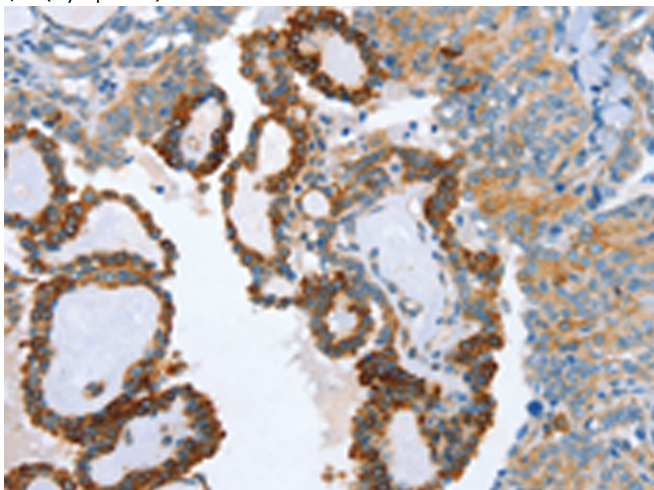
**储存和运输:** Store at -20°C. Avoid repeated freezing and thawing



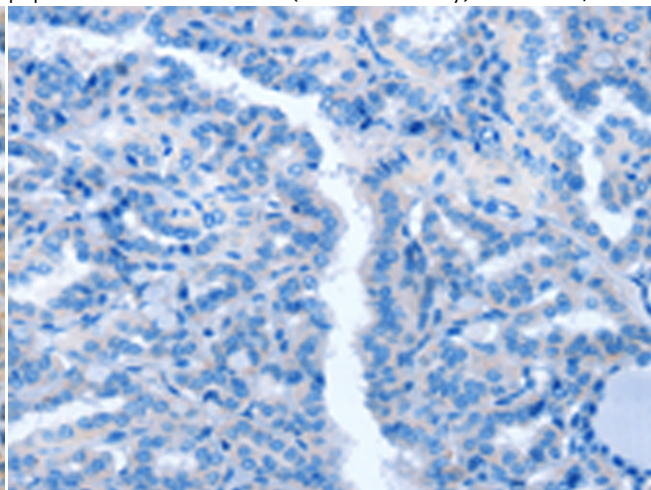
Immunohistochemistry analysis of paraffin embedded Human cervical cancer tissue using 220300(AIP Antibody) at a dilution of 1/80(Cytoplasm).



In comparison with the IHC on the left, the same paraffin-embedded Human cervical cancer tissue is first treated with the synthetic peptide and then with 220300(Anti-AIP Antibody) at dilution 1/80.



The image on the left is immunohistochemistry of paraffin-embedded Human thyroid cancer tissue using 220300(Anti-AIP Antibody) at a dilution of 1/80.



In comparison with the IHC on the left, the same paraffin-embedded Human thyroid cancer tissue is first treated with synthetic peptide and then with D261300(Anti-AIP Antibody) at dilution 1/80.



# Product Description

Pioneering GTPase and Oncogene Product Development since 2010

---