

## AHCTF1 RABBIT PAB

货号: S221946

产品全名: AHCTF1 兔多抗

基因符号: ELYS; MST108; TMBS62; MSTP108

**UNIPROT ID:** Q8WYP5 (Gene Accession - NP\_056261)

**背景:** Predicted to enable DNA binding activity. Involved in nuclear pore complex assembly and regulation of cytokinesis. Located in nuclear membrane. Colocalizes with chromatin; kinetochore; and nuclear pore outer ring.

**抗原:** Synthetic peptide of human AHCTF1

**经过测试的应用:** ELISA, IHC

**推荐稀释比:** IHC: 50-200; ELISA: 5000-10000

**种属反应性:** Rabbit

**克隆性:** Rabbit Polyclonal

**亚型:** Immunogen-specific rabbit IgG

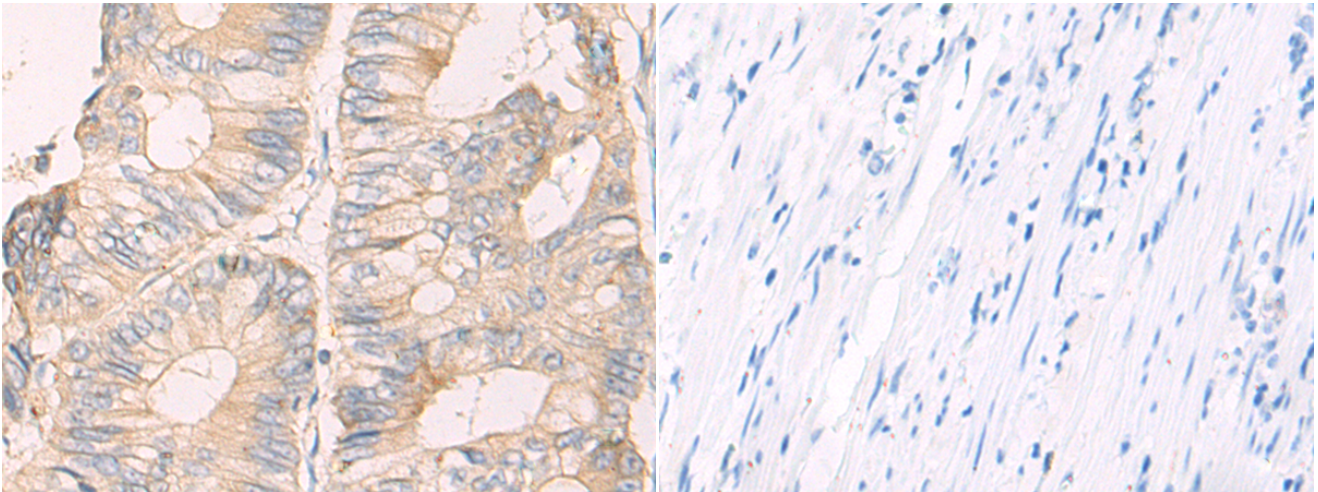
**纯化:** Antigen affinity purification

**种属反应性:** Human, Mouse

**成分:** PBS (without Mg<sup>2+</sup> and Ca<sup>2+</sup>), pH 7.4, 150 mM NaCl, 0.05% Sodium Azide and 40% glycerol

**研究领域:** Epigenetics and Nuclear Signaling, Cardiovascular, Stem Cells

**储存和运输:** Store at -20°C. Avoid repeated freezing and thawing



Immunohistochemistry analysis of paraffin embedded Human colorectal cancer tissue using 221946(AHCTF1 Antibody) at a dilution of 1/50(Cytoplasm and Cell membrane).

In comparison with the IHC on the left, the same paraffin-embedded Human colorectal cancer tissue is first treated with the synthetic peptide and then with 221946(Anti-AHCTF1 Antibody) at dilution 1/50.