

AGTR2 RABBIT PAB

货号: S213806

产品全名: AGTR2 兔多抗

基因符号: AT2; ATGR2; MRX88

UNIPROT ID: P50052 (Gene Accession - NP_000677)

背景: The protein encoded by this gene belongs to the G-protein coupled receptor 1 family, and functions as a receptor for angiotensin II. It is an integral membrane protein that is highly expressed in fetus, but scantily in adult tissues, except brain, adrenal medulla, and atretic ovary. This receptor has been shown to mediate programmed cell death and this apoptotic function may play an important role in developmental biology and pathophysiology. Mutations in this gene are been associated with X-linked mental retardation.

抗原: Synthetic peptide of human AGTR2

经过测试的应用: ELISA, IHC

推荐稀释比: IHC: 25-100; ELISA: 2000-5000

种属反应性: Rabbit

克隆性: Rabbit Polyclonal

亚型: Immunogen-specific rabbit IgG

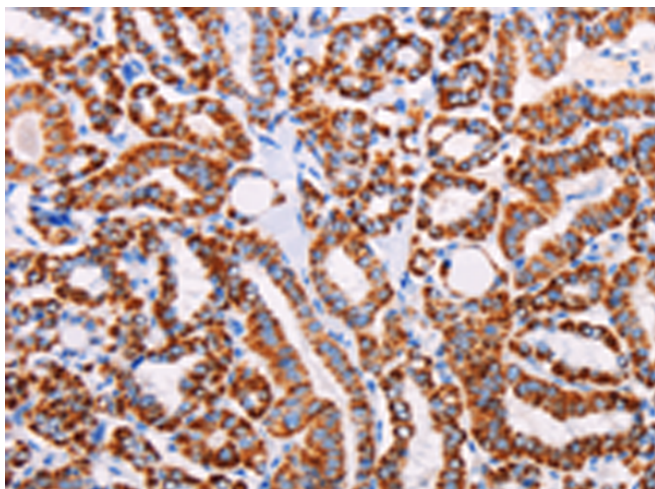
纯化: Antigen affinity purification

种属反应性: Human, Mouse, Rat

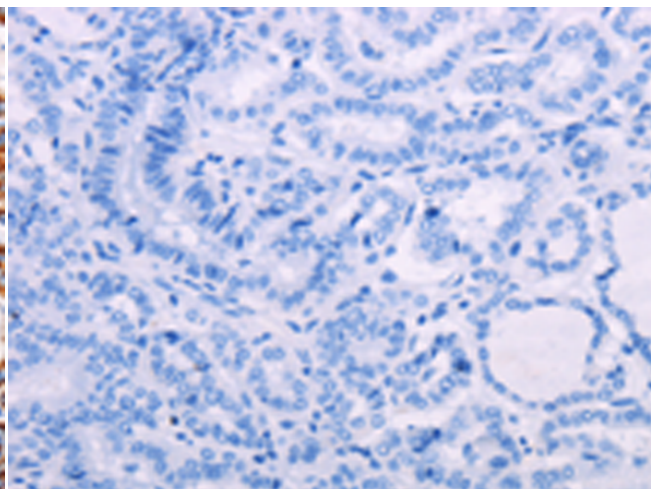
成分: PBS (without Mg²⁺ and Ca²⁺), pH 7.4, 150 mM NaCl, 0.05% Sodium Azide and 40% glycerol

研究领域: Signal Transduction, Cardiovascular

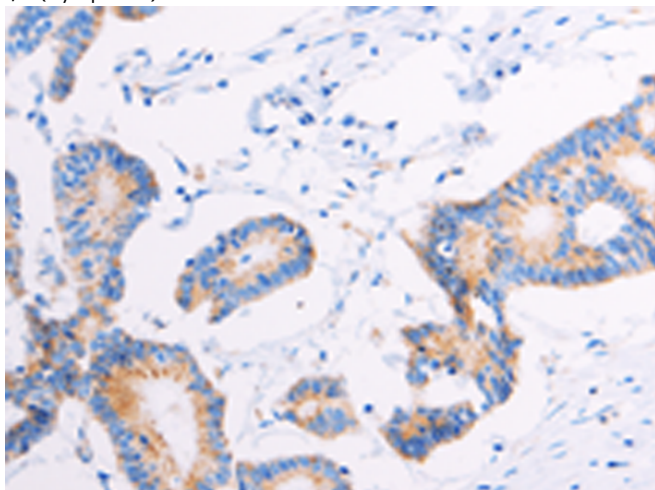
储存和运输: Store at -20°C. Avoid repeated freezing and thawing



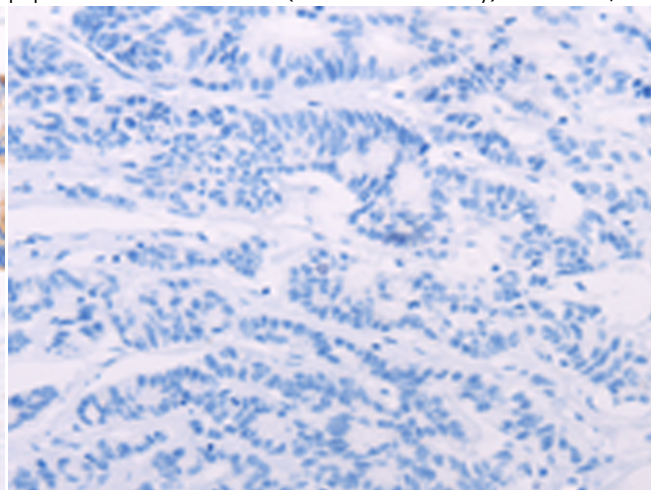
Immunohistochemistry analysis of paraffin embedded Human thyroid cancer tissue using 213806 (AGTR2 Antibody) at a dilution of 1/15 (Cytoplasm).



In comparison with the IHC on the left, the same paraffin-embedded Human thyroid cancer tissue is first treated with the synthetic peptide and then with 213806 (Anti-AGTR2 Antibody) at dilution 1/15.



The image on the left is immunohistochemistry of paraffin-embedded Human colon cancer tissue using 213806 (Anti-AGTR2 Antibody) at a dilution of 1/15.



In comparison with the IHC on the left, the same paraffin-embedded Human colon cancer tissue is first treated with synthetic peptide and then with D160864 (Anti-AGTR2 Antibody) at dilution 1/15.



Product Description

Pioneering GTPase and Oncogene Product Development since 2010
