

AGR2 RABBIT PAB

货号: S216238

产品全名: AGR2 兔多抗

基因符号: AG2, GOB-4, HAG-2, XAG-2, PDIA17

UNIPROT ID: O95994 (Gene Accession - BC015503)

背景: Anterior gradient protein 2 homolog (AGR2) is a human protein originally discovered in *Xenopus laevis*, encoded for by the gene of the same name. In *Xenopus* AGR2 is an important role in cement gland differentiation, however in human cancer cell lines high levels of AGR2 correlate with reduction of the p53 response and AGR2 levels are elevated in the preneoplastic tissue Barrett's oesophagus.

抗原: Fusion protein of human AGR2

经过测试的应用: ELISA, WB, IHC

推荐稀释比: IHC: Oct-50;WB: 1000-5000;ELISA: 1000-10000

种属反应性: Rabbit

克隆性: Rabbit Polyclonal

亚型: Immunogen-specific rabbit IgG

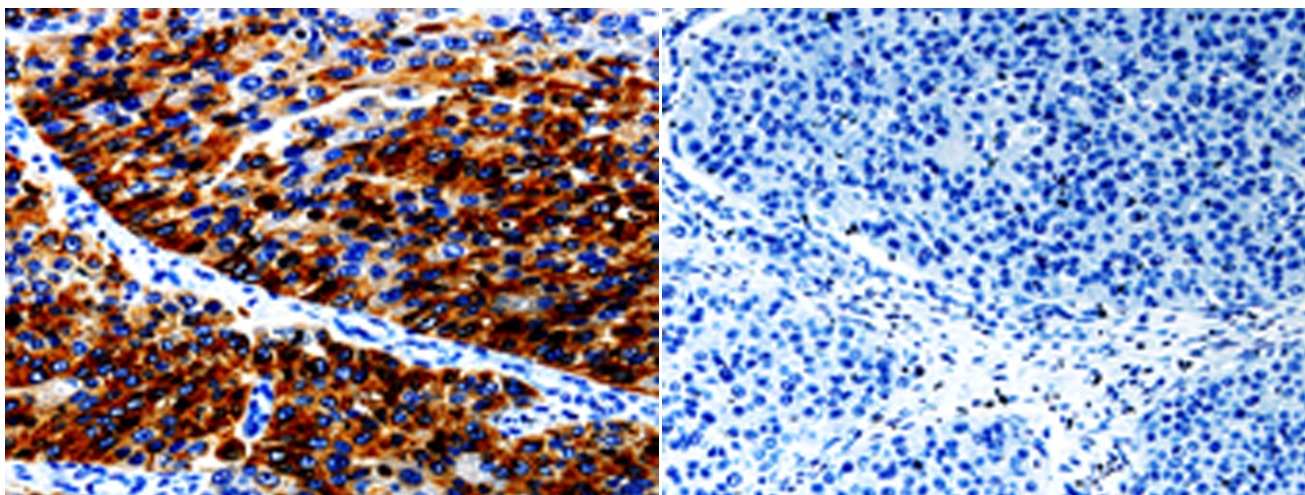
纯化: Antigen affinity purification

种属反应性: Human, Mouse

成分: PBS (without Mg²⁺ and Ca²⁺), pH 7.4, 150 mM NaCl, 0.05% Sodium Azide and 40% glycerol

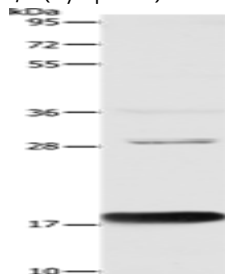
研究领域: Signal Transduction, Cancer

储存和运输: Store at -20°C. Avoid repeated freezing and thawing



Immunohistochemistry analysis of paraffin embedded Human renal cancer tissue using 216238(AGR2 Antibody) at a dilution of 1/10(Cytoplasm).

In comparison with the IHC on the left, the same paraffin-embedded Human renal cancer tissue is first treated with the fusion protein and then with 216238(Anti-AGR2 Antibody) at dilution 1/10.



Gel: 10%SDS-PAGE, Lysate: 40 µg;
Lane: Mouse Large intestine tissue;
Primary antibody: 216238(AGR2 Antibody) at dilution 1/1000;
Secondary antibody: Goat anti rabbit IgG at 1/8000 dilution;
Exposure time: 20 seconds