

## AGBL2 RABBIT PAB

货号: S216956

产品全名: AGBL2 兔多抗

基因符号: CCP2

**UNIPROT ID:** Q5U5Z8 (Gene Accession - BC028200)

**背景:** AGBL2 is a 902 amino acid cytoplasmic protein belonging to the peptidase M14 family. CCP2 is considered a metallocarboxypeptidase that may play a role in the processing of tubulin. CCP2 binds one zinc ion per subunit as a cofactor and exists as three alternatively spliced isoforms.

**抗原:** Fusion protein of human AGBL2

**经过测试的应用:** ELISA, WB, IHC

**推荐稀释比:** IHC: 25-100;WB: 200-1000;ELISA: 1000-2000

**种属反应性:** Rabbit

**克隆性:** Rabbit Polyclonal

**亚型:** Immunogen-specific rabbit IgG

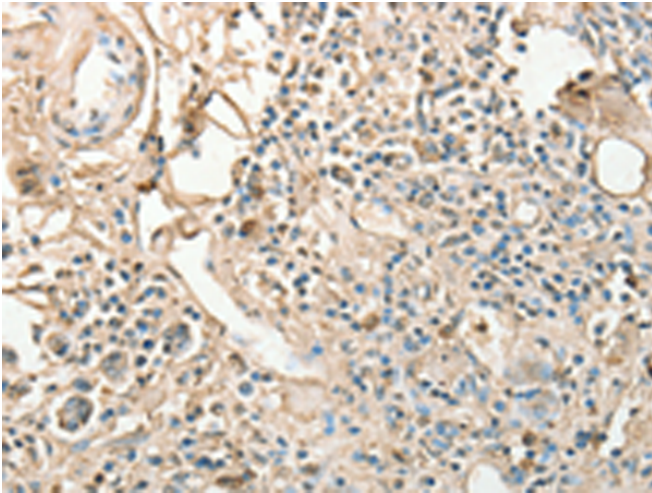
**纯化:** Antigen affinity purification

**种属反应性:** Human

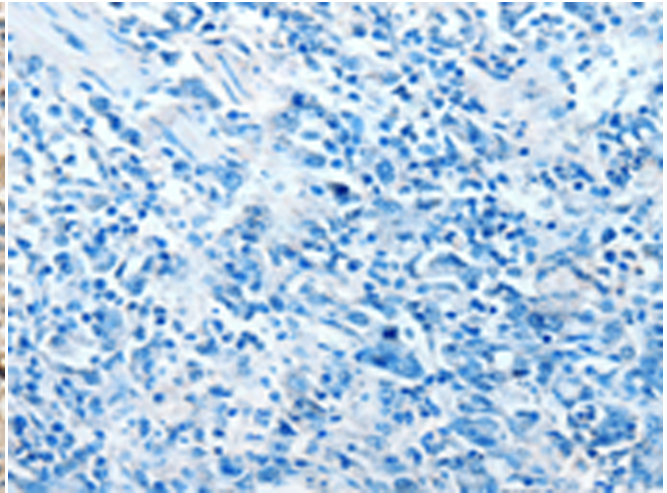
**成分:** PBS (without Mg<sup>2+</sup> and Ca<sup>2+</sup>), pH 7.4, 150 mM NaCl, 0.05% Sodium Azide and 40% glycerol

**研究领域:** Signal Transduction

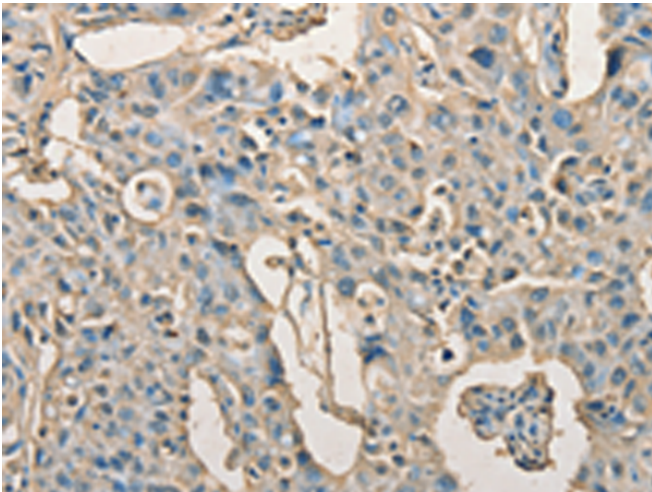
**储存和运输:** Store at -20°C. Avoid repeated freezing and thawing



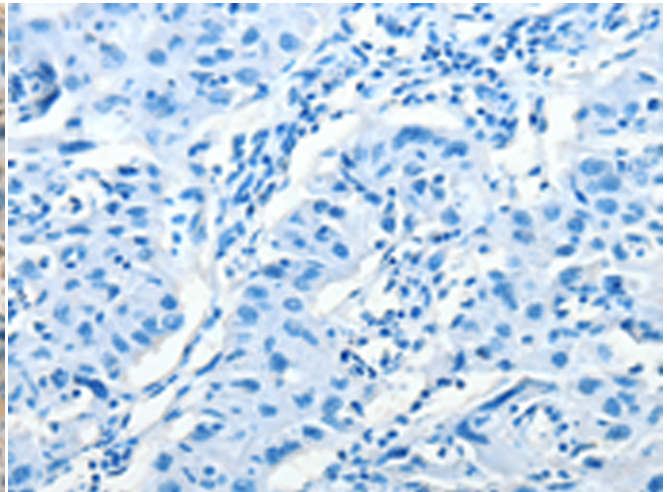
Immunohistochemistry analysis of paraffin embedded Human gastric cancer tissue using 216956 (AGBL2 Antibody) at a dilution of 1/25 (Cytoplasm).



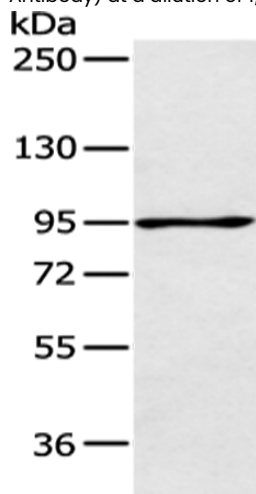
In comparison with the IHC on the left, the same paraffin-embedded Human gastric cancer tissue is first treated with the fusion protein and then with 216956 (Anti-AGBL2 Antibody) at dilution 1/25.



The image on the left is immunohistochemistry of paraffin-embedded Human lung cancer tissue using 216956 (Anti-AGBL2 Antibody) at a dilution of 1/25.



In comparison with the IHC on the left, the same paraffin-embedded Human lung cancer tissue is first treated with fusion protein and then with D221534 (Anti-AGBL2 Antibody) at dilution 1/25.



Gel: 6% SDS-PAGE, Lysate: 40 µg;  
Lane: 293T cell;  
Primary antibody: 216956 (AGBL2 Antibody) at dilution 1/200;  
Secondary antibody: Goat anti rabbit IgG at 1/8000 dilution;  
Exposure time: 1 minute



# Product Description

Pioneering GTPase and Oncogene Product Development since 2010

---