

## AGAP2 RABBIT PAB

货号: S220456

产品全名: AGAP2 兔多抗

基因符号 PIKE; GGAP2; CENTG1

**UNIPROT ID:** Q99490 (Gene Accession - NP\_001116244)

**背景:** The protein encoded by this gene belongs to the centaurin gamma-like family. It mediates anti-apoptotic effects of nerve growth factor by activating nuclear phosphoinositide 3-kinase. It is overexpressed in cancer cells, and promotes cancer cell invasion. Alternatively spliced transcript variants encoding different isoforms have been described for this gene.

**抗原:** Synthetic peptide of human AGAP2

**经过测试的应用:** ELISA, IHC

**推荐稀释比:** IHC: 50-200; ELISA: 1000-5000

**种属反应性:** Rabbit

**克隆性:** Rabbit Polyclonal

**亚型:** Immunogen-specific rabbit IgG

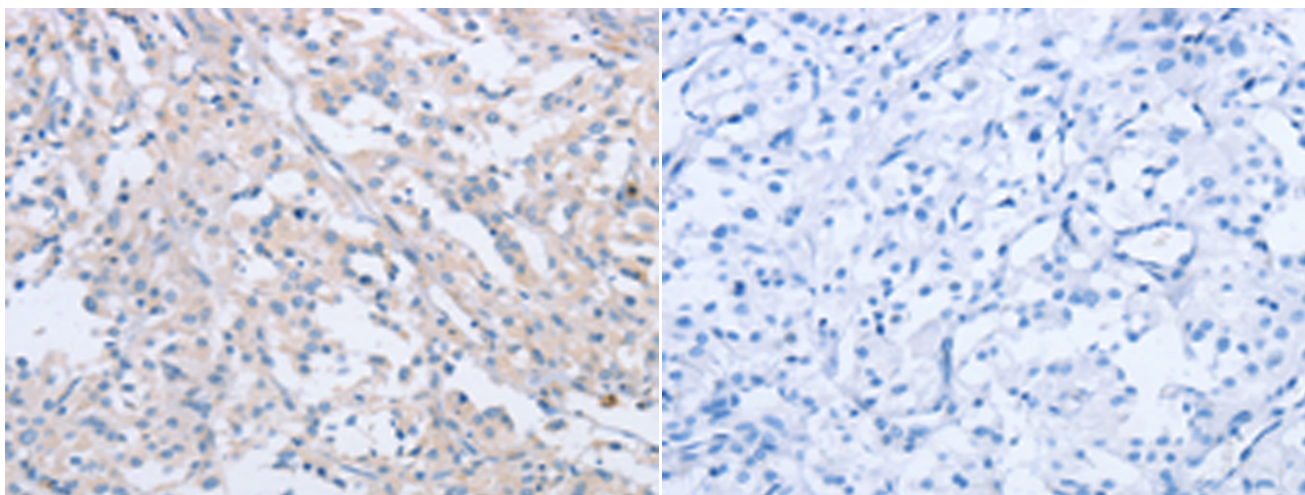
**纯化:** Antigen affinity purification

**种属反应性:** Human

**成分:** PBS (without Mg<sup>2+</sup> and Ca<sup>2+</sup>), pH 7.4, 150 mM NaCl, 0.05% Sodium Azide and 40% glycerol

**研究领域:** Signal Transduction, Epigenetics and Nuclear Signaling

**储存和运输:** Store at -20°C. Avoid repeated freezing and thawing



Immunohistochemistry analysis of paraffin embedded Human thyroid cancer tissue using 220456(AGAP2 Antibody) at a dilution of 1/60(Cytoplasm).

In comparison with the IHC on the left, the same paraffin-embedded Human thyroid cancer tissue is first treated with the synthetic peptide and then with 220456(Anti-AGAP2 Antibody) at dilution 1/60.