

ADRM1 RABBIT PAB

货号: S218875

产品全名: ADRM1 兔多抗

基因符号: ARM1; ARM-1; GPI10

UNIPROT ID: Q16186 (Gene Accession - BC017245)

背景: This gene encodes a member of the adhesion regulating molecule 1 protein family. The encoded protein is a component of the proteasome where it acts as a ubiquitin receptor and recruits the deubiquitinating enzyme, ubiquitin carboxyl-terminal hydrolase L5. Increased levels of the encoded protein are associated with increased cell adhesion, which is likely an indirect effect of this intracellular protein. Dysregulation of this gene has been implicated in carcinogenesis. Alternative splicing results in multiple transcript variants.

抗原: Fusion protein of human ADRM1

经过测试的应用: ELISA, IHC

推荐稀释比: IHC: 50-300; ELISA: 5000-10000

种属反应性: Rabbit

克隆性: Rabbit Polyclonal

亚型: Immunogen-specific rabbit IgG

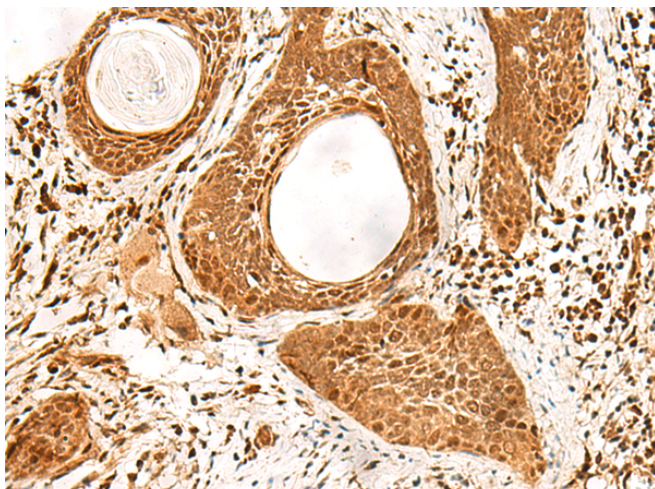
纯化: Antigen affinity purification

种属反应性: Human, Mouse, Rat

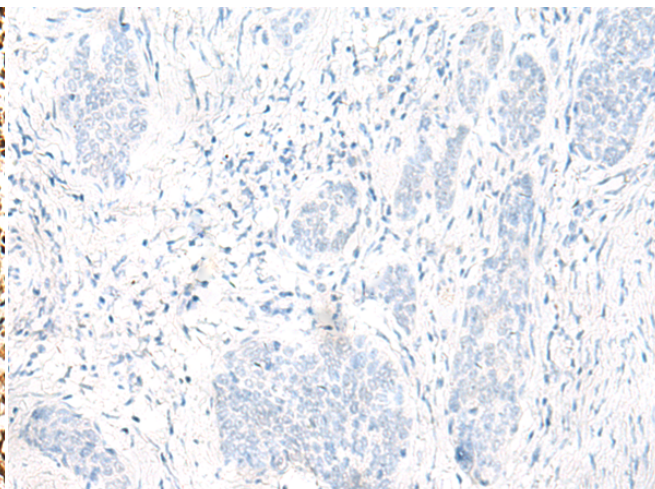
成分: PBS (without Mg²⁺ and Ca²⁺), pH 7.4, 150 mM NaCl, 0.05% Sodium Azide and 40% glycerol

研究领域: Signal Transduction

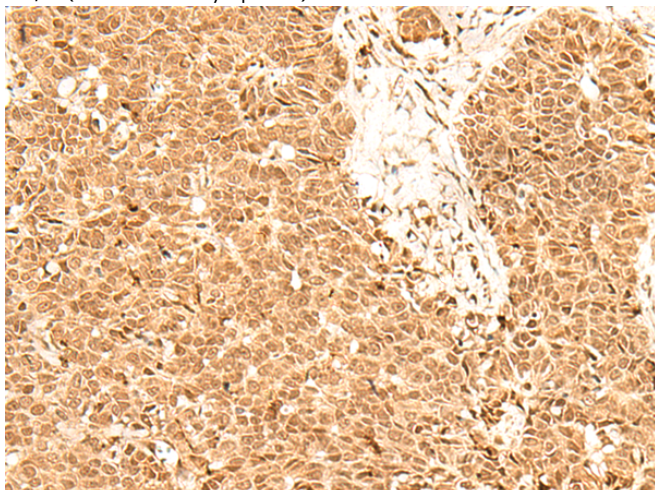
储存和运输: Store at -20°C. Avoid repeated freezing and thawing



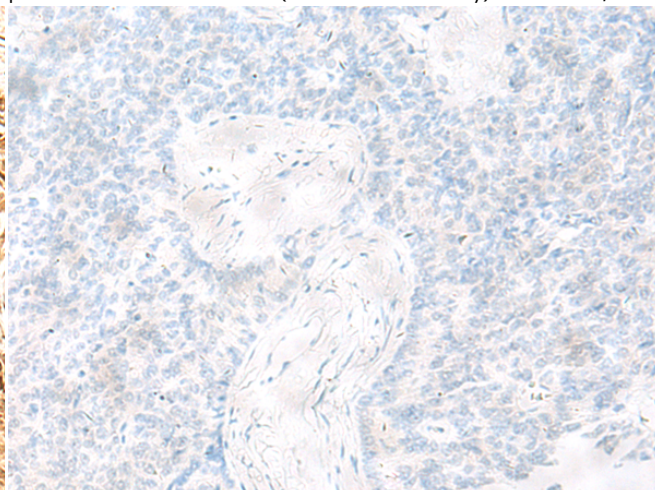
Immunohistochemistry analysis of paraffin embedded Human esophagus cancer tissue using 218875(ADRM1 Antibody) at a dilution of 1/70(Nucleus and Cytoplasm).



In comparison with the IHC on the left, the same paraffin-embedded Human esophagus cancer tissue is first treated with the fusion protein and then with 218875(Anti-ADRM1 Antibody) at dilution 1/70.



The image on the left is immunohistochemistry of paraffin-embedded Human ovarian cancer tissue using 218875(Anti-ADRM1 Antibody) at a dilution of 1/70.



In comparison with the IHC on the left, the same paraffin-embedded Human ovarian cancer tissue is first treated with fusion protein and then with D225421(Anti-ADRM1 Antibody) at dilution 1/70.



Product Description

Pioneering GTPase and Oncogene Product Development since 2010
