

ADRB3 RABBIT PAB

货号: S219622

产品全名: ADRB3 兔多抗

基因符号: BETA3AR

UNIPROT ID: P13945 (Gene Accession - NP_000016)

背景: The protein encoded by this gene belongs to the family of beta adrenergic receptors, which mediate catecholamine-induced activation of adenylate cyclase through the action of G proteins. This receptor is located mainly in the adipose tissue and is involved in the regulation of lipolysis and thermogenesis.

抗原: Synthetic peptide of human ADRB3

经过测试的应用: ELISA, IHC

推荐稀释比: IHC: 15-50; ELISA: 1000-2000

种属反应性: Rabbit

克隆性: Rabbit Polyclonal

亚型: Immunogen-specific rabbit IgG

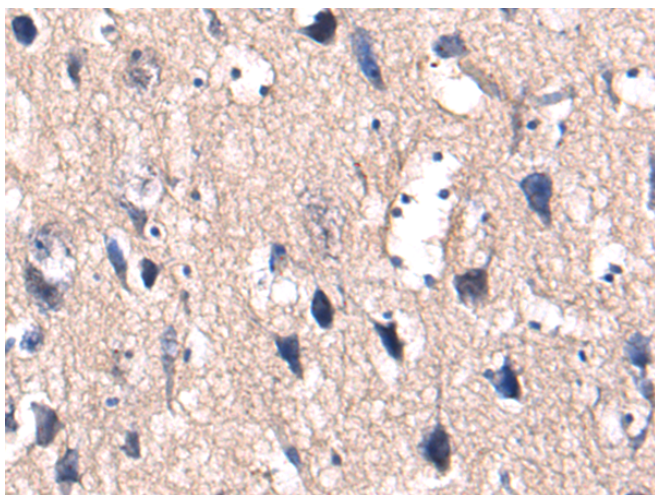
纯化: Antigen affinity purification

种属反应性: Human

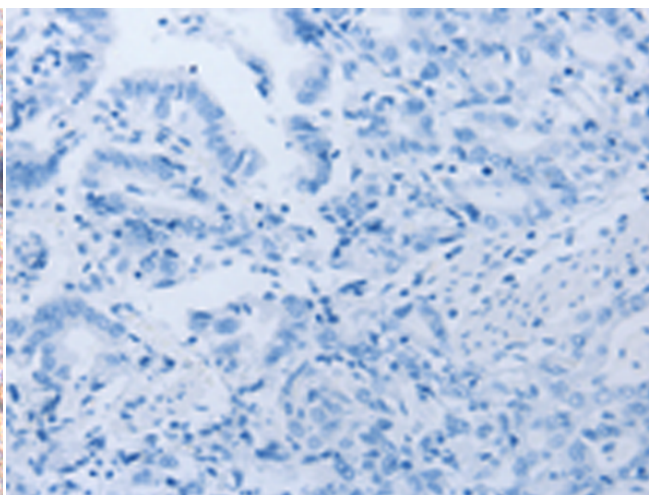
成分: PBS (without Mg²⁺ and Ca²⁺), pH 7.4, 150 mM NaCl, 0.05% Sodium Azide and 40% glycerol

研究领域: Signal Transduction, Metabolism, Neuroscience, Cardiovascular

储存和运输: Store at -20°C. Avoid repeated freezing and thawing



Immunohistochemistry analysis of paraffin embedded Human gastric cancer tissue using 219622 (ADRB3 Antibody) at a dilution of 1/20 (Cytoplasm, Cell membrane).



In comparison with the IHC on the left, the same paraffin-embedded Human gastric cancer tissue is first treated with the synthetic peptide and then with 219622 (Anti-ADRB3 Antibody) at dilution 1/20.