

## ADRB1 RABBIT PAB

货号: S219620

产品全名: ADRB1 兔多抗

基因符号 RHR, BIAR, ADRB1R, BETA1AR

**UNIPROT ID:** P08588

**背景:** The adrenergic receptors (subtypes alpha 1, alpha 2, beta 1, and beta 2) are a prototypic family of guanine nucleotide binding regulatory protein-coupled receptors that mediate the physiological effects of the hormone epinephrine and the neurotransmitter norepinephrine. Specific polymorphisms in this gene have been shown to affect the resting heart rate and can be involved in heart failure.

**抗原:** Synthetic peptide of human ADRB1

**经过测试的应用:** ELISA, IHC

**推荐稀释比:** IHC: 25-100; ELISA: 1000-5000

**种属反应性:** Rabbit

**克隆性:** Rabbit Polyclonal

**亚型:** Immunogen-specific rabbit IgG

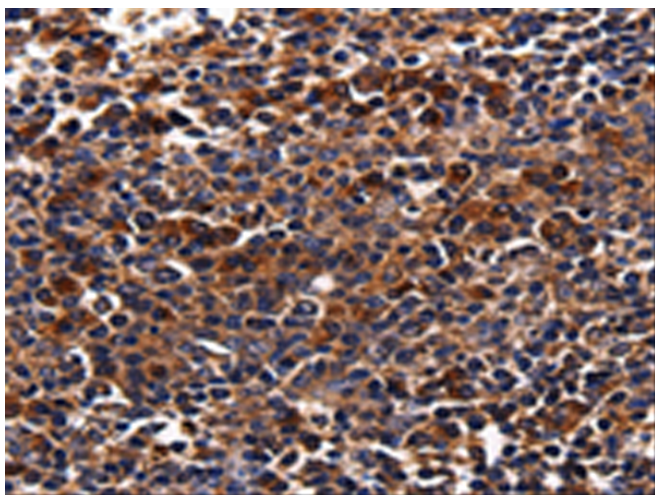
**纯化:** Antigen affinity purification

**种属反应性:** Human, Mouse, Rat

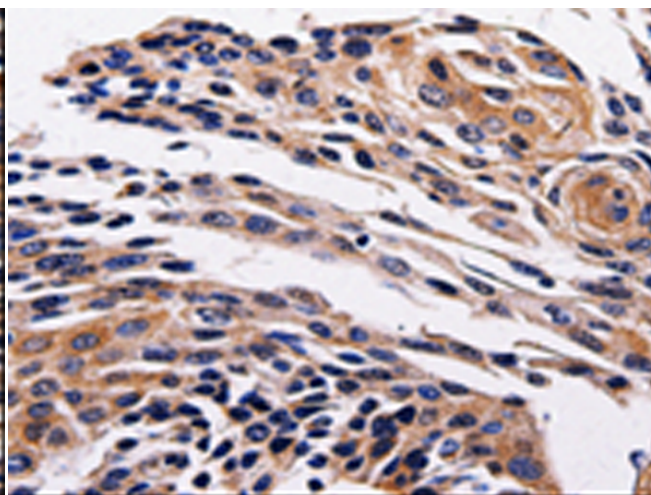
**成分:** PBS (without Mg<sup>2+</sup> and Ca<sup>2+</sup>), pH 7.4, 150 mM NaCl, 0.05% Sodium Azide and 40% glycerol

**研究领域:** Signal Transduction, Cell Biology, Neuroscience, Cardiovascular

**储存和运输:** Store at -20°C. Avoid repeated freezing and thawing



Immunohistochemistry analysis of paraffin-embedded Human tonsil cancer tissue using 219620 (ADRB1 Antibody) at a dilution of 1/25 (Cell membrane, Cytoplasm).



Immunohistochemistry analysis of paraffin-embedded Human cervical cancer tissue using 219620 (Anti-ADRB1 Antibody) at a dilution of 1/25.