

## ADGRL4 RABBIT PAB

货号: S221982

产品全名: ADGRL4 兔多抗

基因符号: ETL; ELTD1; KPG\_003

**UNIPROT ID:** Q9HBW9 (Gene Accession - NP\_071442)

背景: Endothelial orphan receptor that acts as a key regulator of angiogenesis.

抗原: Synthetic peptide of human ADGRL4

经过测试的应用: ELISA, IHC

推荐稀释比: IHC: 25-50; ELISA: 5000-10000

种属反应性: Rabbit

克隆性: Rabbit Polyclonal

亚型: Immunogen-specific rabbit IgG

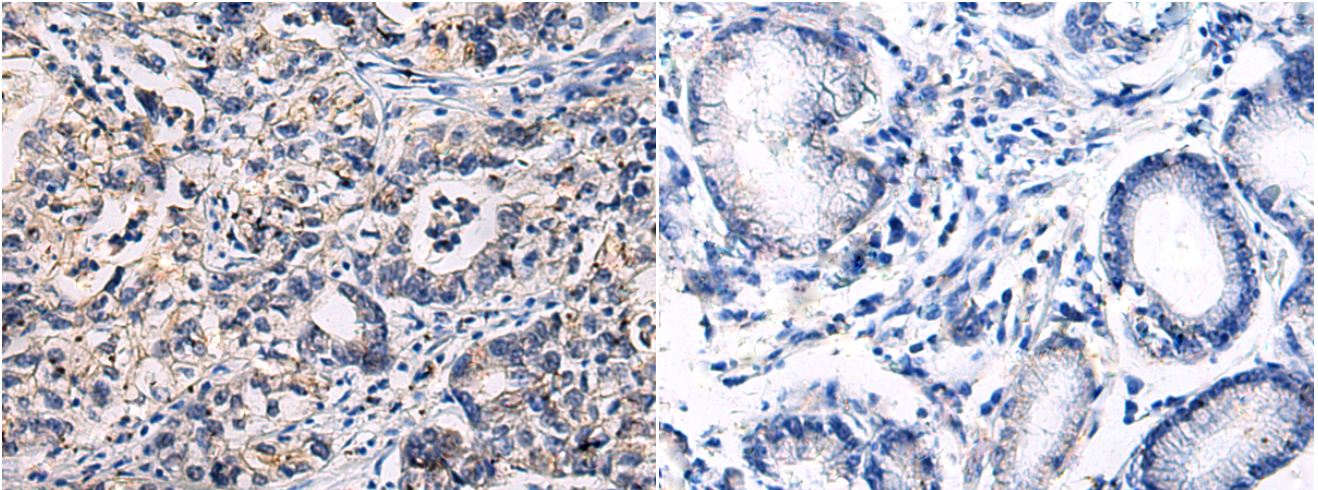
纯化: Antigen affinity purification

种属反应性: Human, Mouse, Rat

成分: PBS (without Mg<sup>2+</sup> and Ca<sup>2+</sup>), pH 7.4, 150 mM NaCl, 0.05% Sodium Azide and 40% glycerol

研究领域: Signal Transduction

储存和运输: Store at -20°C. Avoid repeated freezing and thawing



Immunohistochemistry analysis of paraffin embedded Human gastric cancer tissue using 221982(ADGRL4 Antibody) at a dilution of 1/35(Cytoplasm).

In comparison with the IHC on the left, the same paraffin-embedded Human gastric cancer tissue is first treated with the synthetic peptide and then with 221982(Anti-ADGRL4 Antibody) at dilution 1/35.