

ADCY3 RABBIT PAB

货号: S217180

产品全名: ADCY3 兔多抗

基因符号 AC3; AC-III; BMIQ19

UNIPROT ID: O60266 (Gene Accession - BC126235)

背景: This gene encodes adenylyl cyclase 3 which is a membrane-associated enzyme and catalyzes the formation of the secondary messenger cyclic adenosine monophosphate (cAMP). This protein appears to be widely expressed in various human tissues and may be involved in a number of physiological and pathophysiological metabolic processes. Two transcript variants encoding different isoforms have been found for this gene.

抗原: Fusion protein of human ADCY3

经过测试的应用: ELISA, IHC

推荐稀释比: IHC: 50-200; ELISA: 5000-10000

种属反应性: Rabbit

克隆性: Rabbit Polyclonal

亚型: Immunogen-specific rabbit IgG

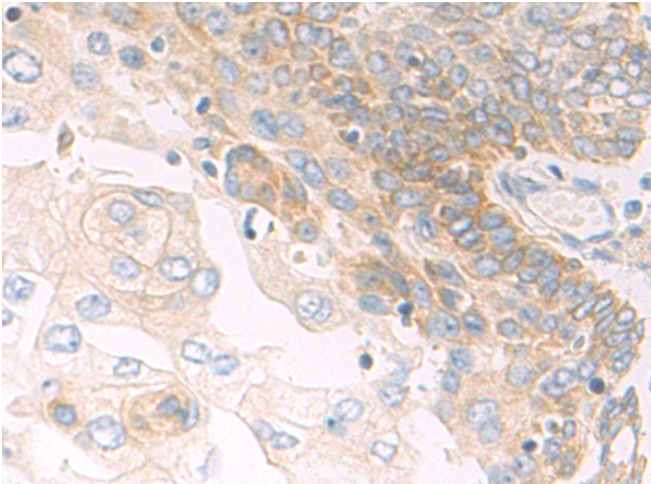
纯化: Antigen affinity purification

种属反应性: Human, Mouse, Rat

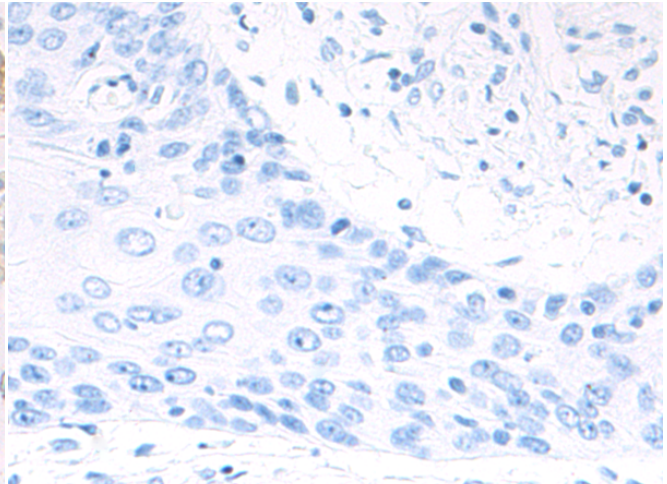
成分: PBS (without Mg²⁺ and Ca²⁺), pH 7.4, 150 mM NaCl, 0.05% Sodium Azide and 40% glycerol

研究领域: Signal Transduction, Cancer, Metabolism

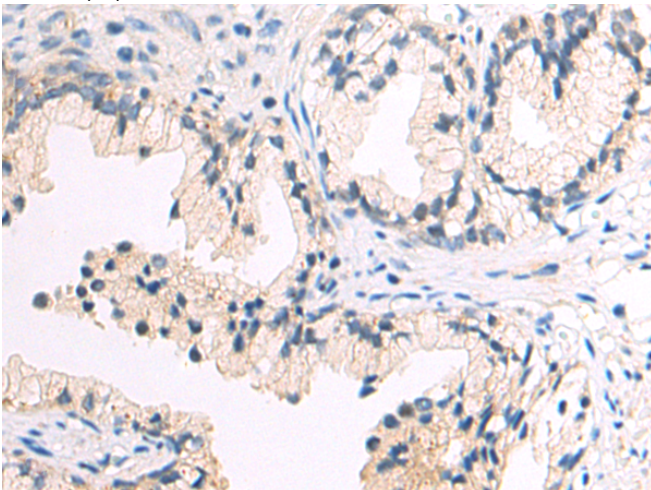
储存和运输: Store at -20°C. Avoid repeated freezing and thawing



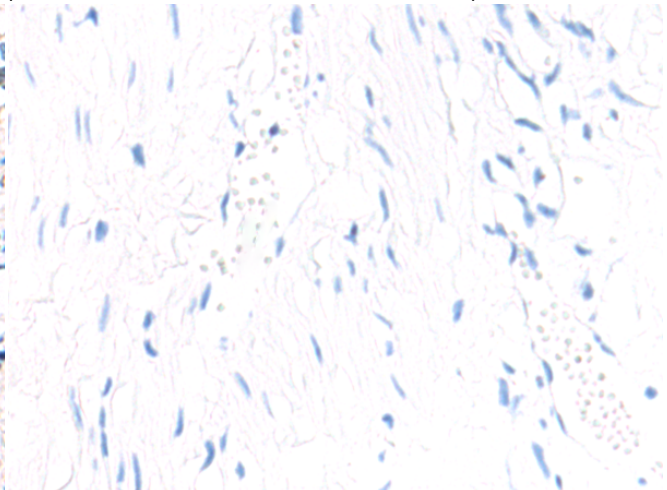
Immunohistochemistry analysis of paraffin embedded Human esophagus cancer tissue using 217180(ADCY3 Antibody) at a dilution of 1/75(Cytoplasm).



In comparison with the IHC on the left, the same paraffin-embedded Human esophagus cancer tissue is first treated with the fusion protein and then with 217180(Anti-ADCY3 Antibody) at dilution 1/75.



The image on the left is immunohistochemistry of paraffin-embedded Human prostate cancer tissue using 217180(Anti-ADCY3 Antibody) at a dilution of 1/75.



In comparison with the IHC on the left, the same paraffin-embedded Human prostate cancer tissue is first treated with fusion protein and then with D221930(Anti-ADCY3 Antibody) at dilution 1/75.



Product Description

Pioneering GTPase and Oncogene Product Development since 2010
