

ADCY2 RABBIT PAB

货号: S221489

产品全名: ADCY2 兔多抗

基因符号 AC2; HBAC2

UNIPROT ID: Q08462 (Gene Accession - NP_065433)

背景: This gene encodes a member of the family of adenylate cyclases, which are membrane-associated enzymes that catalyze the formation of the secondary messenger cyclic adenosine monophosphate (cAMP). This enzyme is insensitive to Ca^{2+} /calmodulin, and is stimulated by the G protein beta and gamma subunit complex. [provided by RefSeq, Jul 2008]

抗原: Synthetic peptide of human ADCY2

经过测试的应用: ELISA, WB, IHC

推荐稀释比: IHC: 50-200;WB: 500-2000;ELISA: 5000-10000

种属反应性: Rabbit

克隆性: Rabbit Polyclonal

亚型: Immunogen-specific rabbit IgG

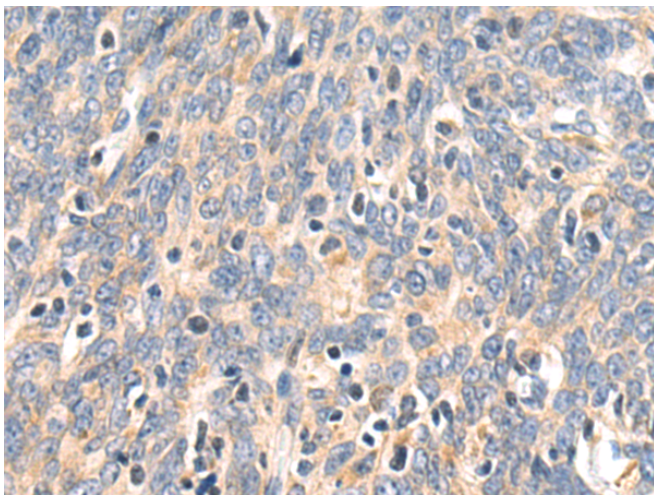
纯化: Antigen affinity purification

种属反应性: Human, Mouse, Rat

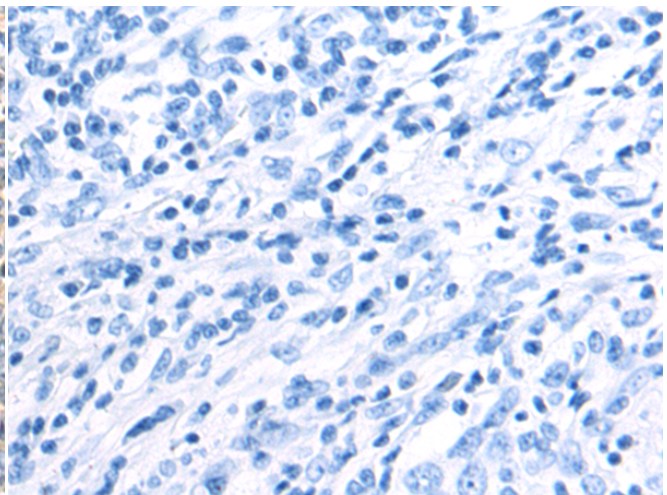
成分: PBS (without Mg^{2+} and Ca^{2+}), pH 7.4, 150 mM NaCl, 0.05% Sodium Azide and 40% glycerol

研究领域: Signal Transduction, Cancer, Metabolism

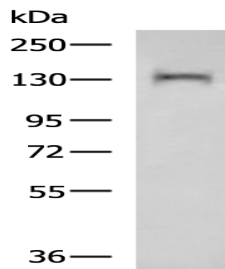
储存和运输: Store at $-20^{\circ}C$. Avoid repeated freezing and thawing



Immunohistochemistry analysis of paraffin embedded Human esophagus cancer tissue using 221489(ADCY2 Antibody) at a dilution of 1/50(Cytoplasm).



In comparison with the IHC on the left, the same paraffin-embedded Human esophagus cancer tissue is first treated with the synthetic peptide and then with 221489(Anti-ADCY2 Antibody) at dilution 1/50.



kDa
 250 —
 130 —
 95 —
 72 —
 55 —
 36 —

Gel: 6%SDS-PAGE, Lysate: 40 μ g;
 Lane: Rat skeletal muscle tissue lysate;
 Primary antibody: 221489(ADCY2 Antibody) at dilution 1/600;
 Secondary antibody: HRP-conjugated Goat anti rabbit IgG at 1/5000 dilution;
 Exposure time: 3 minutes