

ADAMTSL2 RABBIT PAB

货号: S216942

产品全名: ADAMTSL2 兔多抗

基因符号: GPHYSD1; ADAMTSL-2

UNIPROT ID: Q86TH1 (Gene Accession - BC050544)

背景: This gene encodes a member of the ADAMTS (a disintegrin and metalloproteinase with thrombospondin motifs) and ADAMTS-like protein family. Members of the family share several distinct protein modules, including a propeptide region, a metalloproteinase domain, a disintegrin-like domain, and a thrombospondin type 1 (TS) motif. Individual members of this family differ in the number of C-terminal TS motifs, and some have unique C-terminal domains. The protein encoded by this gene lacks the protease domain, and is therefore of a member of the ADAMTS-like protein subfamily. It is a secreted glycoprotein that binds the cell surface and extracellular matrix; it also interacts with latent transforming growth factor beta binding protein 1. Mutations in this gene have been associated with geleophysic dysplasia.

抗原: Fusion protein of human ADAMTSL2

经过测试的应用: ELISA, WB, IHC

推荐稀释比: IHC: 50-200;WB: 500-2000;ELISA: 5000-10000

种属反应性: Rabbit

克隆性: Rabbit Polyclonal

亚型: Immunogen-specific rabbit IgG

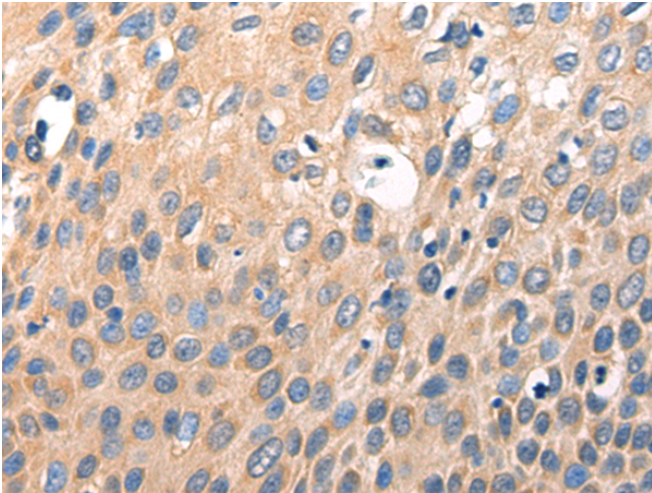
纯化: Antigen affinity purification

种属反应性: Human, Mouse

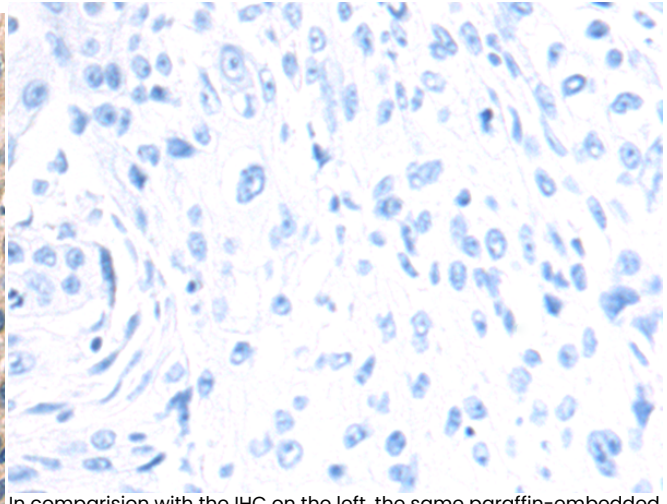
成分: PBS (without Mg²⁺ and Ca²⁺), pH 7.4, 150 mM NaCl, 0.05% Sodium Azide and 40% glycerol

研究领域: Signal Transduction, Developmental Biology

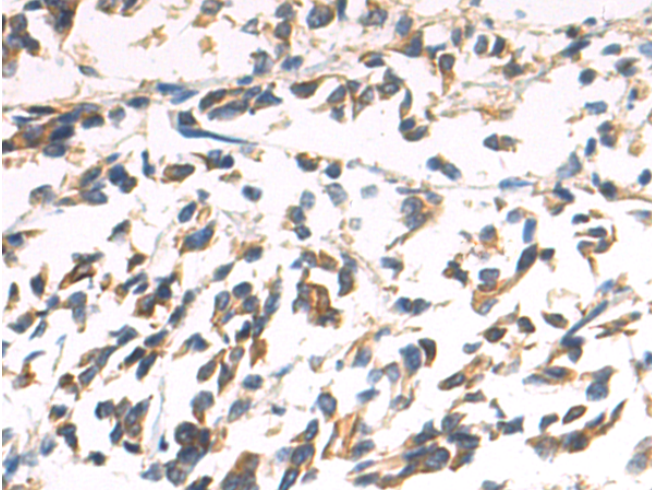
储存和运输: Store at -20°C. Avoid repeated freezing and thawing



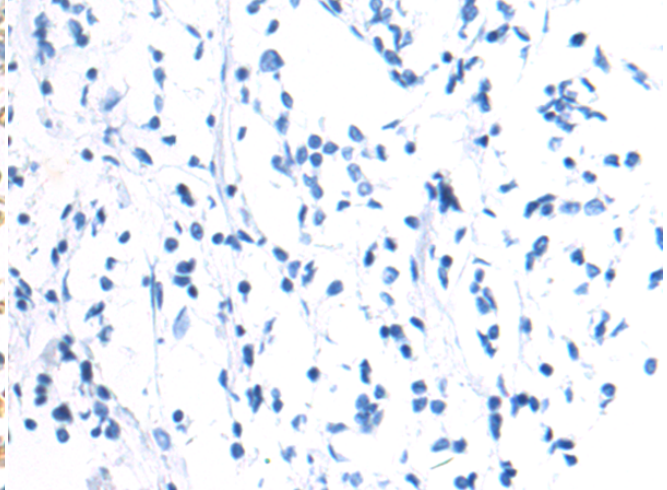
Immunohistochemistry analysis of paraffin embedded Human esophagus cancer tissue using 216942 (ADAMTSL2 Antibody) at a dilution of 1/70 (Secreted).



In comparison with the IHC on the left, the same paraffin-embedded Human esophagus cancer tissue is first treated with the fusion protein and then with 216942 (Anti-ADAMTSL2 Antibody) at dilution 1/70.



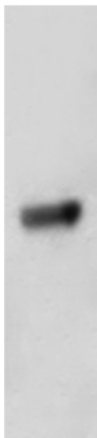
The image on the left is immunohistochemistry of paraffin-embedded Human breast cancer tissue using 216942 (Anti-ADAMTSL2 Antibody) at a dilution of 1/70.



In comparison with the IHC on the left, the same paraffin-embedded Human breast cancer tissue is first treated with fusion protein and then with D221513 (Anti-ADAMTSL2 Antibody) at dilution 1/70.

kDa

250 —
130 —
95 —
72 —
55 —



Gel: 6% SDS-PAGE, Lysate: 40 µg;
Lane: A549 cell lysate;
Primary antibody: 216942 (ADAMTSL2 Antibody) at dilution 1/800;
Secondary antibody: HRP-conjugated Goat anti rabbit IgG at 1/5000 dilution;
Exposure time: 3 seconds



Product Description

Pioneering GTPase and Oncogene Product Development since 2010
