

ADAMTSL1 RABBIT PAB

货号: S216941

产品全名: ADAMTSL1 兔多抗

基因符号: C9orf94; PUNCTIN; ADAMTSR1; ADAMTSL-1

UNIPROT ID: Q8N6G6 (Gene Accession - BC100788)

背景: This gene encodes a secreted protein and member of the ADAMTS (a disintegrin and metalloproteinase with thrombospondin motif) family. This protein lacks the metalloproteinase and disintegrin-like domains, which are typical of the ADAMTS family, but contains other ADAMTS domains, including the thrombospondin type 1 motif. This protein may have important functions in the extracellular matrix. Alternative splicing results in multiple transcript variants encoding distinct proteins.

抗原: Fusion protein of human ADAMTSL1

经过测试的应用: ELISA, IHC

推荐稀释比: IHC: 15-50; ELISA: 1000-2000

种属反应性: Rabbit

克隆性: Rabbit Polyclonal

亚型: Immunogen-specific rabbit IgG

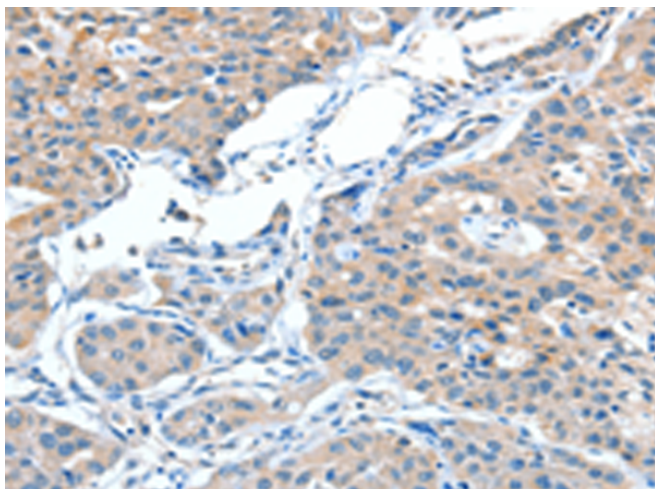
纯化: Antigen affinity purification

种属反应性: Human, Mouse

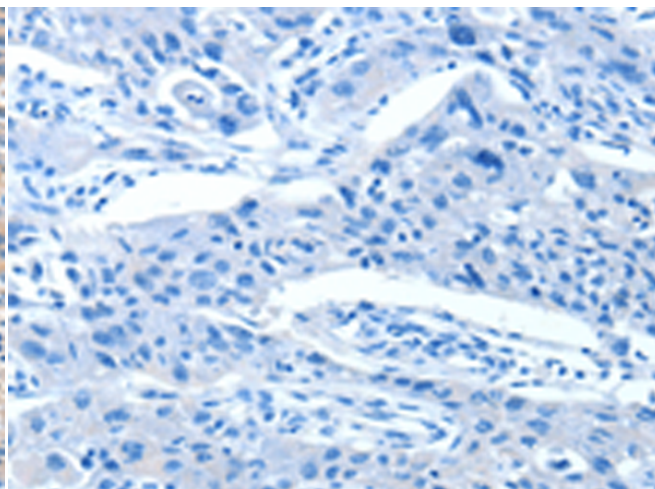
成分: PBS (without Mg²⁺ and Ca²⁺), pH 7.4, 150 mM NaCl, 0.05% Sodium Azide and 40% glycerol

研究领域: Signal Transduction

储存和运输: Store at -20°C. Avoid repeated freezing and thawing



Immunohistochemistry analysis of paraffin embedded Human lung cancer tissue using 216941(ADAMTSL1 Antibody) at a dilution of 1/15(Cytoplasm).



In comparison with the IHC on the left, the same paraffin-embedded Human lung cancer tissue is first treated with the fusion protein and then with 216941(Anti-ADAMTSL1 Antibody) at dilution 1/15.