

ADAMTS6 RABBIT PAB

货号: S220032

产品全名: ADAMTS6 兔多抗

基因符号: ADAM-TS6; ADAMTS-6; ADAM-TS 6

UNIPROT ID: Q9UKP5 (Gene Accession - NP_922932)

背景: This gene encodes a member of the ADAMTS (a disintegrin and metalloproteinase with thrombospondin motifs) protein family. Members of the family share several distinct protein modules, including a propeptide region, a metalloproteinase domain, a disintegrin-like domain, and a thrombospondin type 1 (TS) motif. Individual members of this family differ in the number of C-terminal TS motifs, and some have unique C-terminal domains.

抗原: Synthetic peptide of human ADAMTS6

经过测试的应用: ELISA, IHC

推荐稀释比: IHC: 15-50; ELISA: 1000-5000

种属反应性: Rabbit

克隆性: Rabbit Polyclonal

亚型: Immunogen-specific rabbit IgG

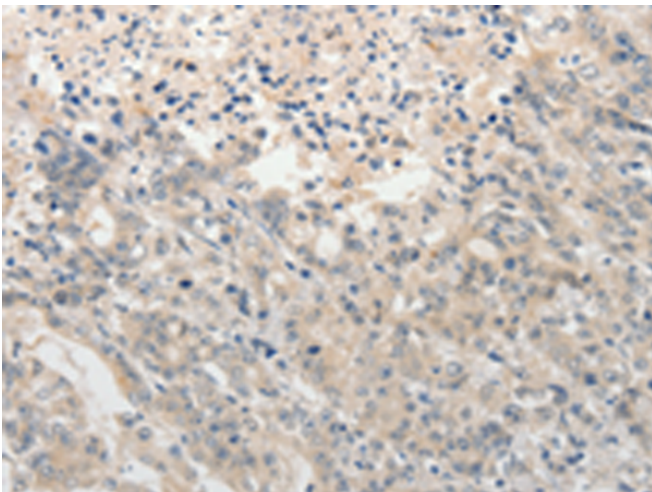
纯化: Antigen affinity purification

种属反应性: Human

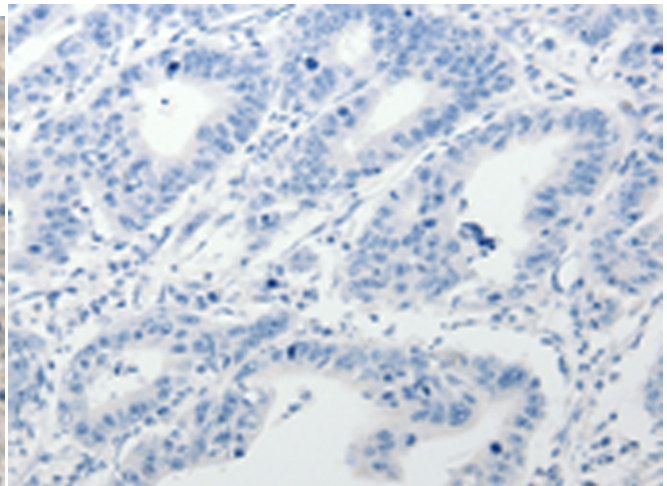
成分: PBS (without Mg²⁺ and Ca²⁺), pH 7.4, 150 mM NaCl, 0.05% Sodium Azide and 40% glycerol

研究领域: Signal Transduction, Cell Biology

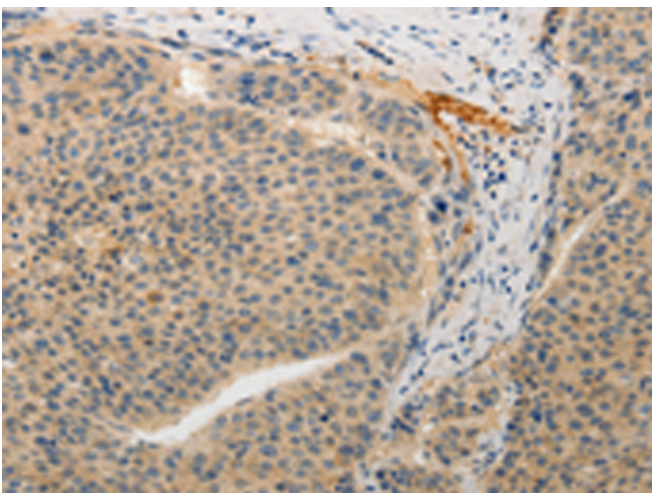
储存和运输: Store at -20°C. Avoid repeated freezing and thawing



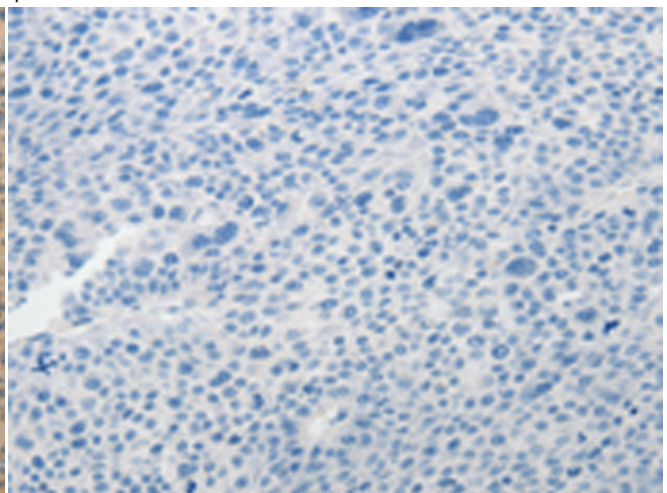
Immunohistochemistry analysis of paraffin embedded Human gastric cancer tissue using 220032(ADAMTS6 Antibody) at a dilution of 1/15 (Secreted, ExtraCellular space, ExtraCellular matrix).



In comparison with the IHC on the left, the same paraffin-embedded Human gastric cancer tissue is first treated with the synthetic peptide and then with 220032(Anti-ADAMTS6 Antibody) at dilution 1/15.



The image on the left is immunohistochemistry of paraffin-embedded Human liver cancer tissue using 220032(Anti-ADAMTS6 Antibody) at a dilution of 1/15.



In comparison with the IHC on the left, the same paraffin-embedded Human liver cancer tissue is first treated with synthetic peptide and then with D260826(Anti-ADAMTS6 Antibody) at dilution 1/15.



Product Description

Pioneering GTPase and Oncogene Product Development since 2010
