

ADAMTS14 RABBIT PAB

货号: S214042

产品全名: ADAMTS14 兔多抗

基因符号

UNIPROT ID: Q8WXS8 (Gene Accession - NP_542453)

背景: This gene encodes a member of the ADAMTS (a disintegrin and metalloproteinase with thrombospondin motif) protein family. Members of the family share several distinct protein modules, including a propeptide region, a metalloproteinase domain, a disintegrin-like domain, and a thrombospondin type 1 (TS) motif. Individual members of this family differ in the number of C-terminal TS motifs, and some have unique C-terminal domains. This gene is highly similar to two family members, ADAMTS2 and ADAMTS3, in its sequence and gene structure, and the encoded protein shares the aminoprocollagen peptidase activity with the protein products encoded by ADAMTS2 and ADAMTS3. Various transcript variants of this gene have been identified. They result from the use of two different promoters and transcription initiation sites as well as alternative splicing sites. The full length nature of some transcripts has not been defined.

抗原: Synthetic peptide of human ADAMTS14

经过测试的应用: ELISA, IHC

推荐稀释比: IHC: 25-100; ELISA: 2000-5000

种属反应性: Rabbit

克隆性: Rabbit Polyclonal

亚型: Immunogen-specific rabbit IgG

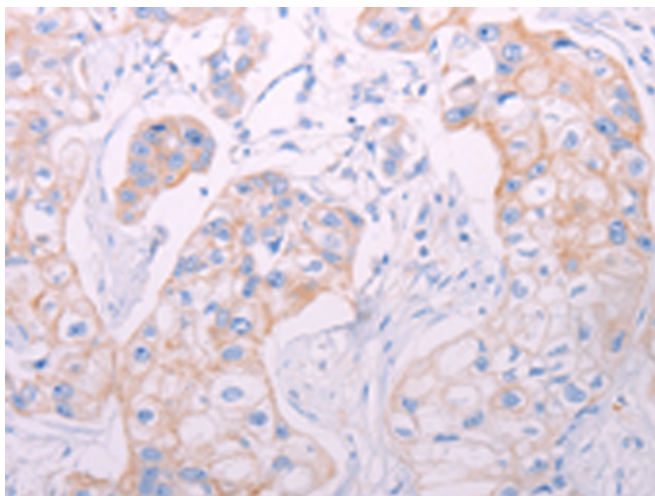
纯化: Antigen affinity purification

种属反应性: Human

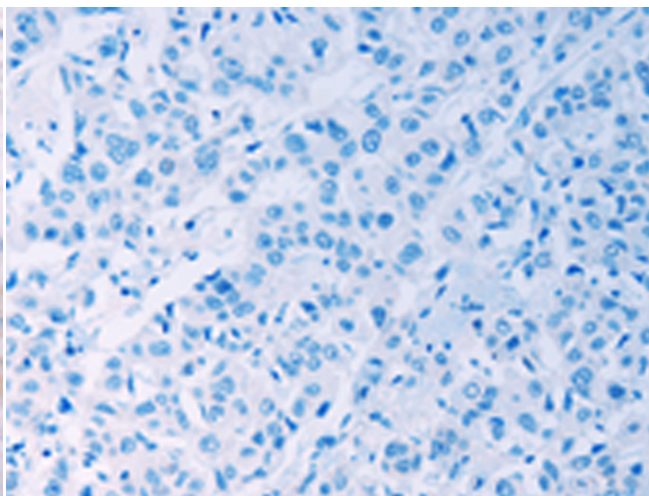
成分: PBS (without Mg²⁺ and Ca²⁺), pH 7.4, 150 mM NaCl, 0.05% Sodium Azide and 40% glycerol

研究领域: Signal Transduction, Cell Biology

储存和运输: Store at -20°C. Avoid repeated freezing and thawing



Immunohistochemistry analysis of paraffin embedded Human breast cancer tissue using 214042(ADAMTS14 Antibody) at a dilution of 1/50(Cytoplasm).



In comparison with the IHC on the left, the same paraffin-embedded Human breast cancer tissue is first treated with the synthetic peptide and then with 214042(Anti-ADAMTS14 Antibody) at dilution 1/50.