

## ADAMTS1 RABBIT PAB

货号: S221175

产品全名: ADAMTS1 兔多抗

基因符号: C3-C5; METH1

**UNIPROT ID:** Q9UHI8 (Gene Accession - NP\_008919)

**背景:** This gene encodes a member of the ADAMTS (a disintegrin and metalloproteinase with thrombospondin motif) protein family. Members of the family share several distinct protein modules, including a propeptide region, a metalloproteinase domain, a disintegrin-like domain, and a thrombospondin type 1 (TS) motif. Individual members of this family differ in the number of C-terminal TS motifs, and some have unique C-terminal domains. The protein encoded by this gene contains two disintegrin loops and three C-terminal TS motifs and has anti-angiogenic activity. The expression of this gene may be associated with various inflammatory processes as well as development of cancer cachexia. This gene is likely to be necessary for normal growth, fertility, and organ morphology and function.

**抗原:** Synthetic peptide of human ADAMTS1

**经过测试的应用:** ELISA, IHC

**推荐稀释比:** IHC: 25-100; ELISA: 2000-5000

**种属反应性:** Rabbit

**克隆性:** Rabbit Polyclonal

**亚型:** Immunogen-specific rabbit IgG

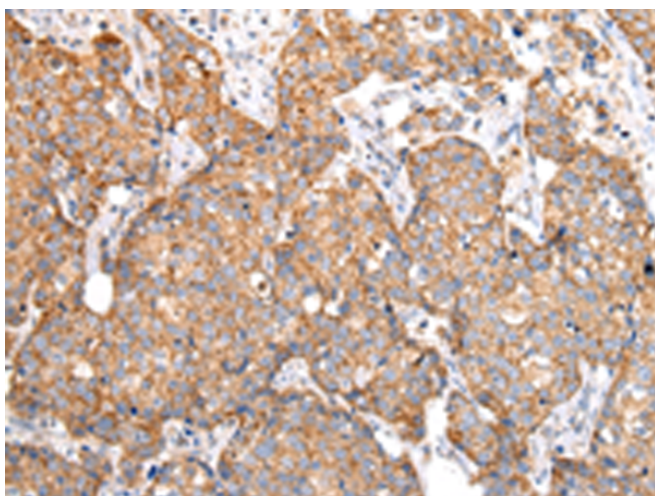
**纯化:** Antigen affinity purification

**种属反应性:** Human, Mouse, Rat

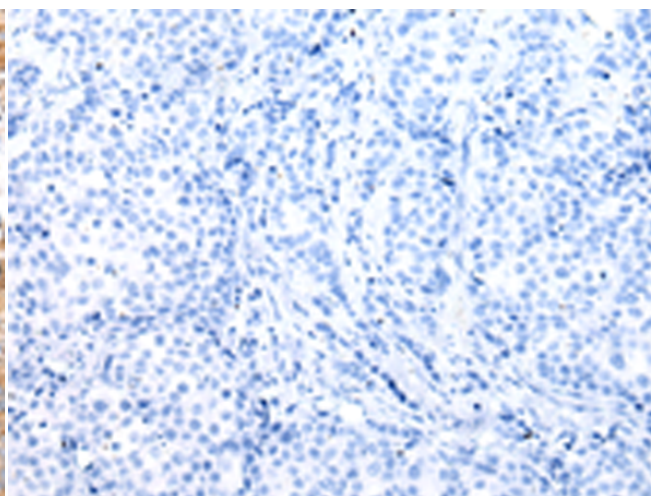
**成分:** PBS (without Mg<sup>2+</sup> and Ca<sup>2+</sup>), pH 7.4, 150 mM NaCl, 0.05% Sodium Azide and 40% glycerol

**研究领域:** Signal Transduction, Cell Biology, Cardiovascular

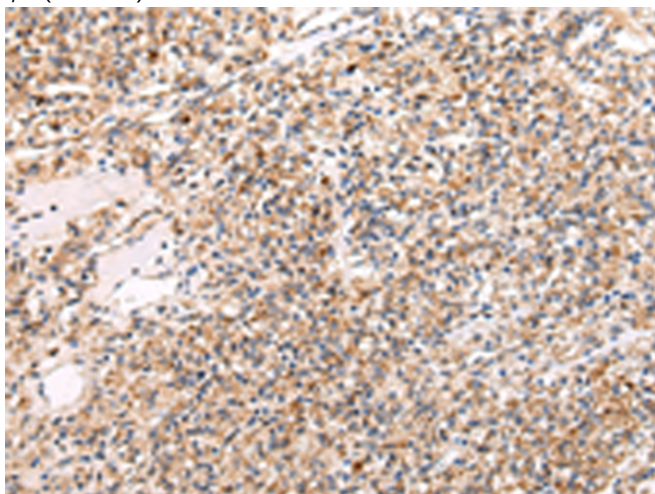
**储存和运输:** Store at -20°C. Avoid repeated freezing and thawing



Immunohistochemistry analysis of paraffin embedded Human breast cancer tissue using 221175(ADAMTS1 Antibody) at a dilution of 1/30(Secreted).



In comparison with the IHC on the left, the same paraffin-embedded Human breast cancer tissue is first treated with the synthetic peptide and then with 221175 (Anti-ADAMTS1 Antibody) at dilution 1/30.



The image on the left is immunohistochemistry of paraffin-embedded Human prostate cancer tissue using 221175(Anti-ADAMTS1 Antibody) at a dilution of 1/30.



In comparison with the IHC on the left, the same paraffin-embedded Human prostate cancer tissue is first treated with synthetic peptide and then with D262658(Anti-ADAMTS1 Antibody) at dilution 1/30.



# Product Description

Pioneering GTPase and Oncogene Product Development since 2010

---