

ADAM7 RABBIT PAB

货号: S216940

产品全名: ADAM7 兔多抗

基因符号 EAPI; GP83; GP-83; ADAM 7; ADAM-7

UNIPROT ID: Q9H2U9 (Gene Accession - BC058037)

背景: This gene encodes a member of the ADAMs family of zinc proteases. These transmembrane proteins play roles in multiple processes including cell signaling, adhesion and migration. The encoded protein lacks protease activity and may play roles in protein-protein interactions and cell adhesion processes including sperm-egg fusion. Mutations in this gene may be involved in the progression of melanoma.

抗原: Fusion protein of human ADAM7

经过测试的应用: ELISA, IHC

推荐稀释比: IHC: 25-100; ELISA: 2000-5000

种属反应性: Rabbit

克隆性: Rabbit Polyclonal

亚型: Immunogen-specific rabbit IgG

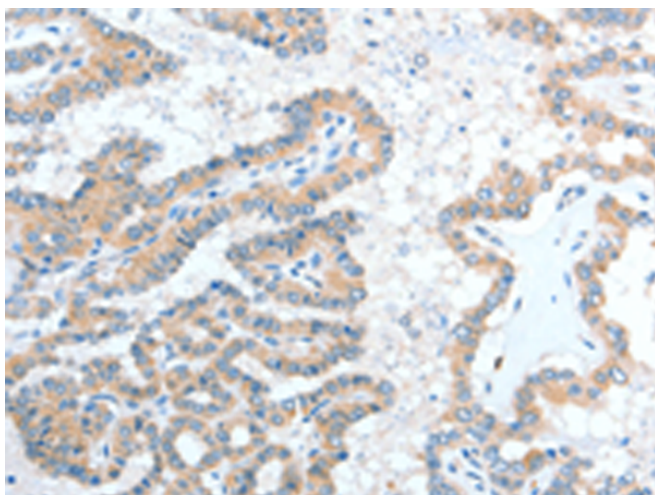
纯化: Antigen affinity purification

种属反应性: Human

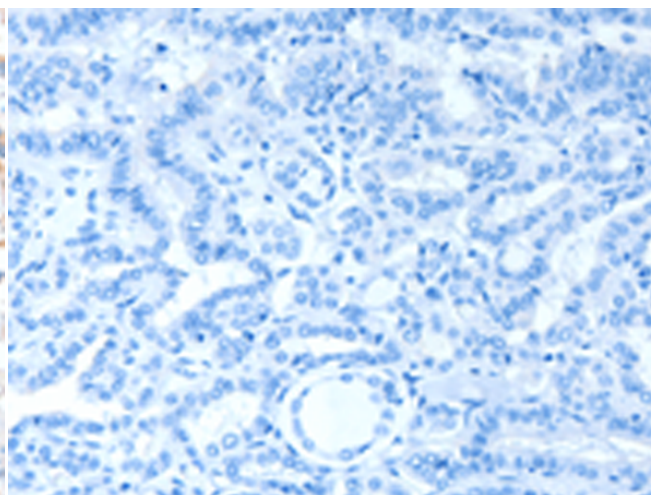
成分: PBS (without Mg²⁺ and Ca²⁺), pH 7.4, 150 mM NaCl, 0.05% Sodium Azide and 40% glycerol

研究领域: Signal Transduction

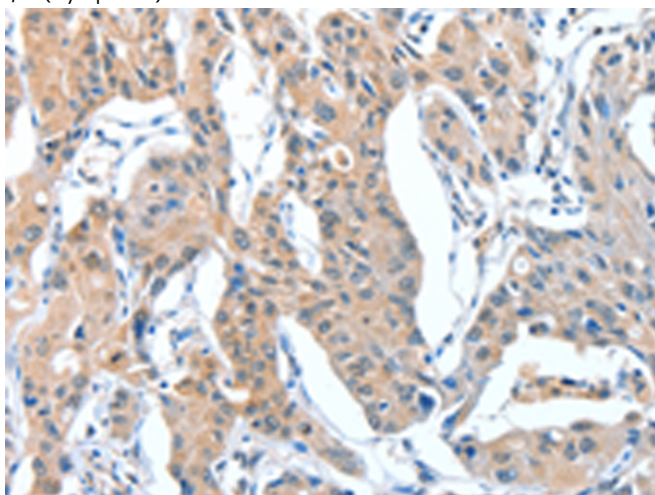
储存和运输: Store at -20°C. Avoid repeated freezing and thawing



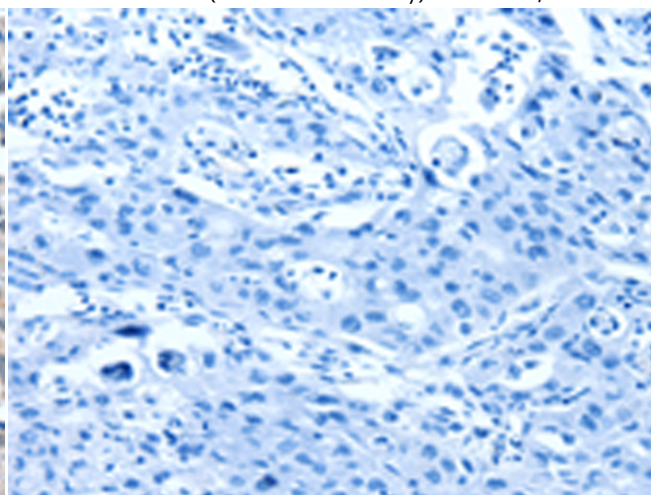
Immunohistochemistry analysis of paraffin embedded Human thyroid cancer tissue using 216940(ADAM7 Antibody) at a dilution of 1/20(Cytoplasm).



In comparison with the IHC on the left, the same paraffin-embedded Human thyroid cancer tissue is first treated with the fusion protein and then with 216940(Anti-ADAM7 Antibody) at dilution 1/20.



The image on the left is immunohistochemistry of paraffin-embedded Human lung cancer tissue using 216940(Anti-ADAM7 Antibody) at a dilution of 1/20.



In comparison with the IHC on the left, the same paraffin-embedded Human lung cancer tissue is first treated with fusion protein and then with D221503(Anti-ADAM7 Antibody) at dilution 1/20.



Product Description

Pioneering GTPase and Oncogene Product Development since 2010
