

ADAM30 RABBIT PAB

货号: S216937

产品全名: ADAM30 兔多抗

基因符号: svph4

UNIPROT ID: Q9UKF2 (Gene Accession - BC028372)

背景: This gene encodes a member of the ADAM (a disintegrin and metalloprotease domain) family. Members of this family are membrane-anchored proteins structurally related to snake venom disintegrins, and have been implicated in a variety of biological processes involving cell-cell and cell-matrix interactions, including fertilization, muscle development, and neurogenesis. This gene is testis-specific and contains a polymorphic region, resulting in isoforms with varying numbers of C-terminal repeats.

抗原: Fusion protein of human ADAM30

经过测试的应用: ELISA, IHC

推荐稀释比: IHC: 100-200; ELISA: 5000-10000

种属反应性: Rabbit

克隆性: Rabbit Polyclonal

亚型: Immunogen-specific rabbit IgG

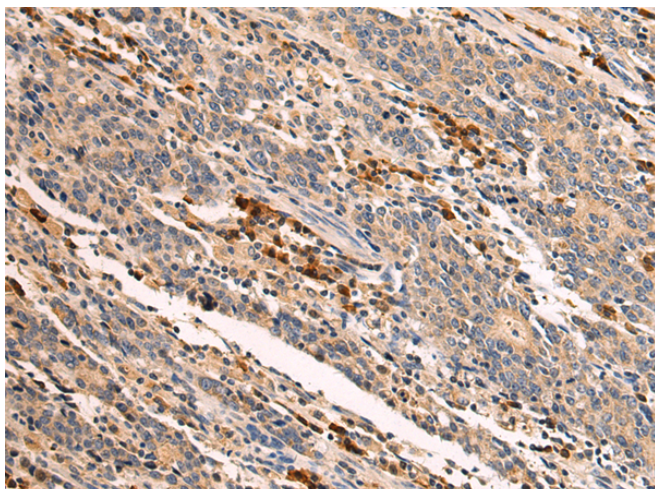
纯化: Antigen affinity purification

种属反应性: Human

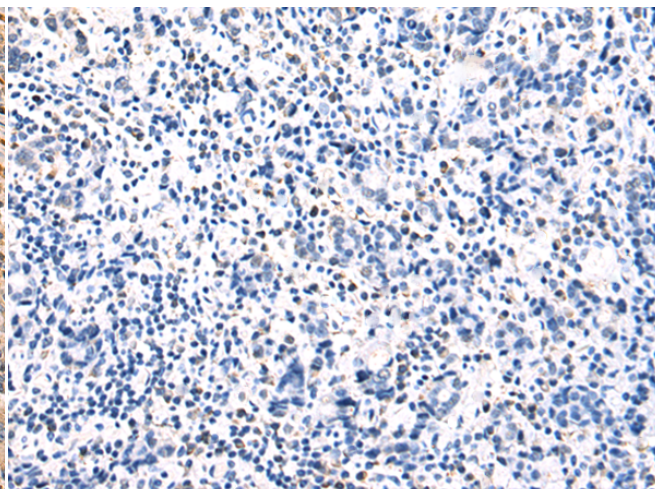
成分: PBS (without Mg²⁺ and Ca²⁺), pH 7.4, 150 mM NaCl, 0.05% Sodium Azide and 40% glycerol

研究领域: Signal Transduction

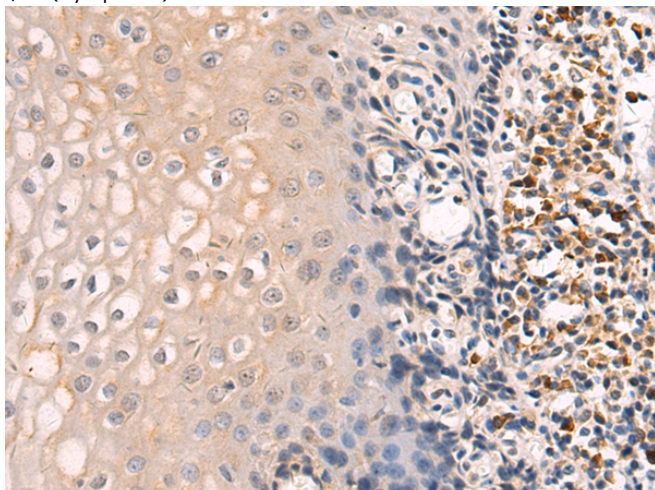
储存和运输: Store at -20°C. Avoid repeated freezing and thawing



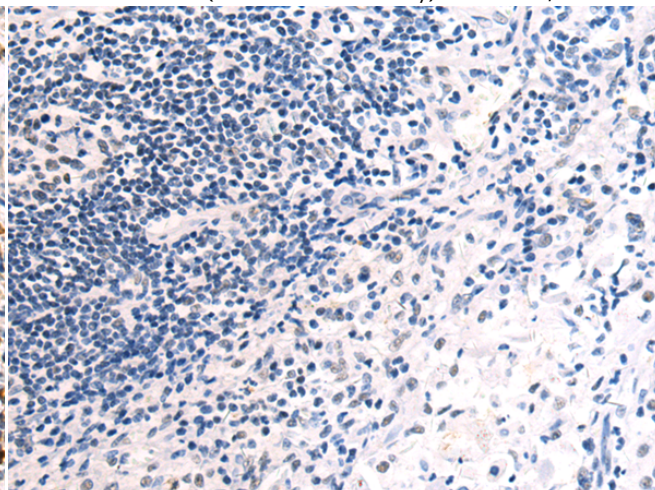
Immunohistochemistry analysis of paraffin embedded Human gastric cancer tissue using 216937(ADAM30 Antibody) at a dilution of 1/100(Cytoplasm).



In comparison with the IHC on the left, the same paraffin-embedded Human gastric cancer tissue is first treated with the fusion protein and then with 216937(Anti-ADAM30 Antibody) at dilution 1/100.



The image on the left is immunohistochemistry of paraffin-embedded Human esophagus cancer tissue using 216937(Anti-ADAM30 Antibody) at a dilution of 1/100.



In comparison with the IHC on the left, the same paraffin-embedded Human esophagus cancer tissue is first treated with fusion protein and then with D221500(Anti-ADAM30 Antibody) at dilution 1/100.



Product Description

Pioneering GTPase and Oncogene Product Development since 2010
