

## ADAM21 RABBIT PAB

货号: S210725

产品全名: ADAM21 兔多抗

基因符号: ADAM31; ADAM 21

**UNIPROT ID:** Q9UKJ8 (Gene Accession - BC109024 )

**背景:** This gene encodes a member of the ADAM (a disintegrin and metalloprotease domain) family. Members of this family are membrane-anchored proteins structurally related to snake venom disintegrins, and have been implicated in a variety of biological processes involving cell-cell and cell-matrix interactions, including fertilization, muscle development, and neurogenesis. The expression of this gene expression is testis-specific.

**抗原:** Fusion protein of human ADAM21

**经过测试的应用:** ELISA, IHC

**推荐稀释比:** IHC: 15-50; ELISA: 1000-2000

**种属反应性:** Rabbit

**克隆性:** Rabbit Polyclonal

**亚型:** Immunogen-specific rabbit IgG

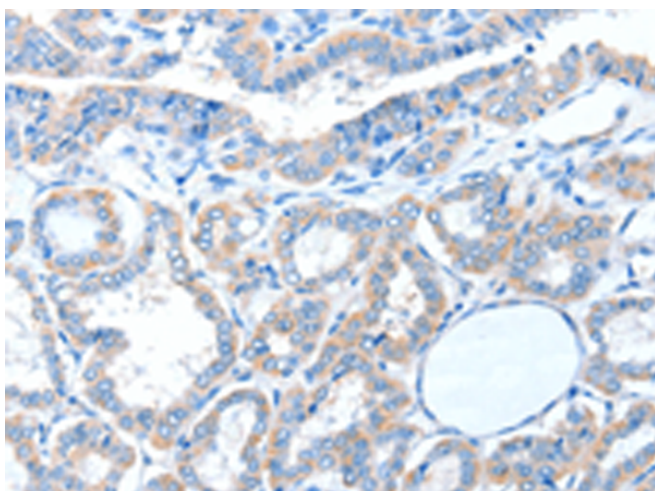
**纯化:** Antigen affinity purification

**种属反应性:** Human

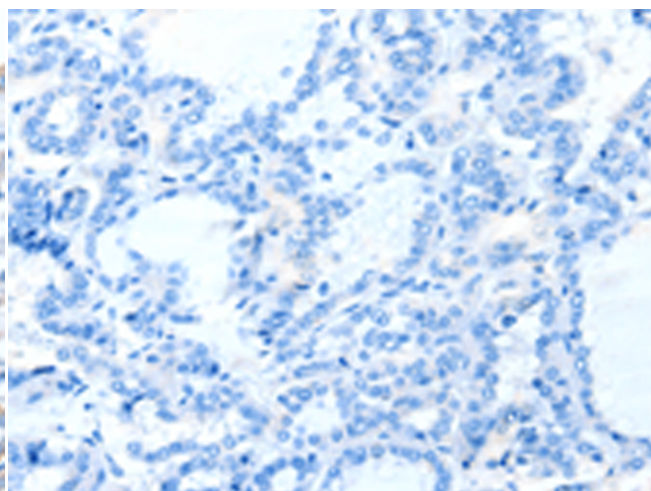
**成分:** PBS (without Mg<sup>2+</sup> and Ca<sup>2+</sup>), pH 7.4, 150 mM NaCl, 0.05% Sodium Azide and 40% glycerol

**研究领域:** Signal Transduction

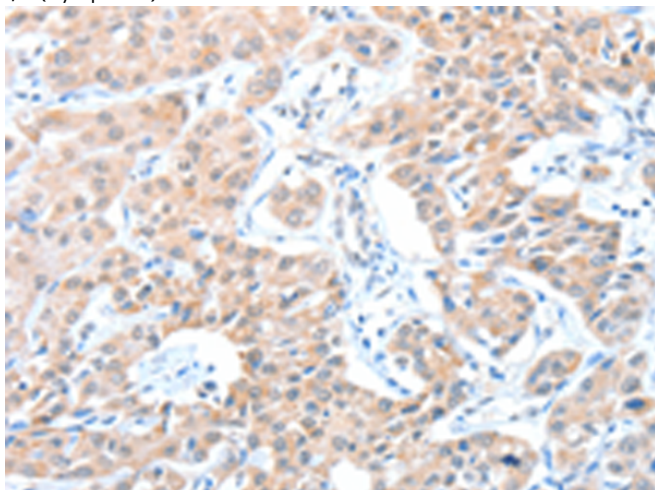
**储存和运输:** Store at -20°C. Avoid repeated freezing and thawing



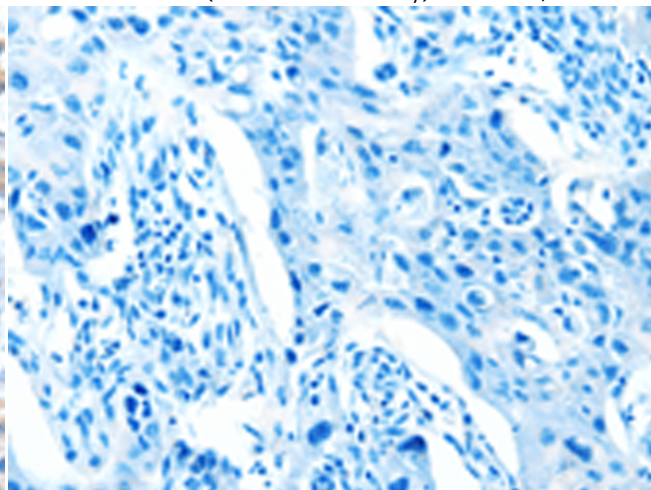
Immunohistochemistry analysis of paraffin embedded Human thyroid cancer tissue using 210725(ADAM21 Antibody) at a dilution of 1/15(Cytoplasm).



In comparison with the IHC on the left, the same paraffin-embedded Human thyroid cancer tissue is first treated with the fusion protein and then with 210725(Anti-ADAM21 Antibody) at dilution 1/15.



The image on the left is immunohistochemistry of paraffin-embedded Human lung cancer tissue using 210725(Anti-ADAM21 Antibody) at a dilution of 1/15.



In comparison with the IHC on the left, the same paraffin-embedded Human lung cancer tissue is first treated with fusion protein and then with D121508(Anti-ADAM21 Antibody) at dilution 1/15.



# Product Description

Pioneering GTPase and Oncogene Product Development since 2010

---