

ACTR3 RABBIT PAB

货号: S219575

产品全名: ACTR3 兔多抗

基因符号: ARP3

UNIPROT ID: P61158 (Gene Accession - BC044590)

背景: The specific function of this gene has not yet been determined; however, the protein it encodes is known to be a major constituent of the ARP2/3 complex. This complex is located at the cell surface and is essential to cell shape and motility through lamellipodial actin assembly and protrusion. Three transcript variants encoding two different isoforms have been found for this gene.

抗原: Fusion protein of human ACTR3

经过测试的应用: ELISA, WB, IHC

推荐稀释比: IHC: 50-100;WB: 500-2000;ELISA: 5000-10000

种属反应性: Rabbit

克隆性: Rabbit Polyclonal

亚型: Immunogen-specific rabbit IgG

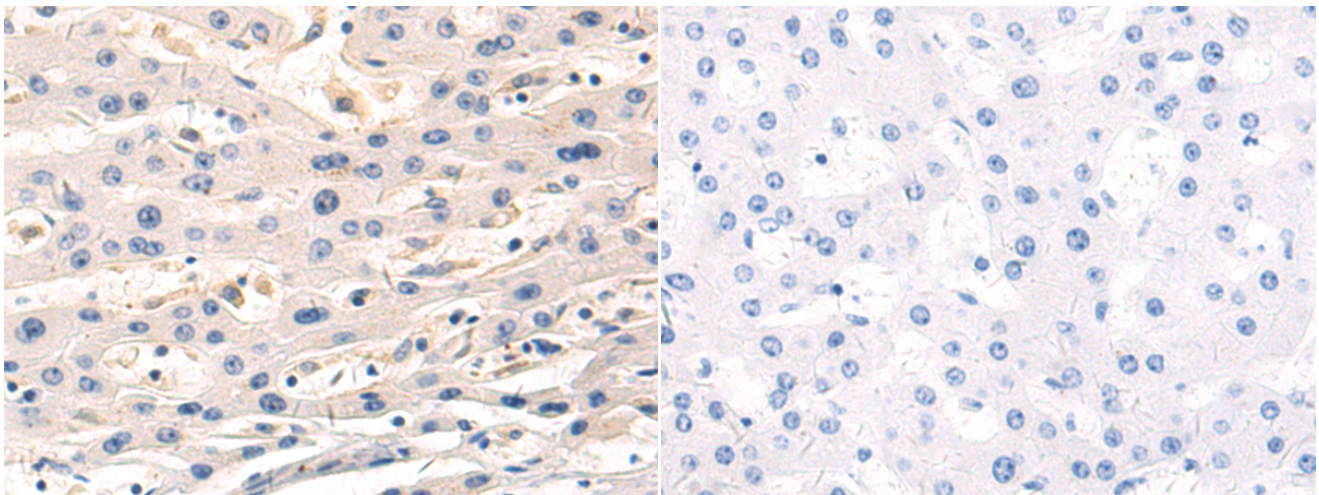
纯化: Antigen affinity purification

种属反应性: Human, Mouse, Rat

成分: PBS (without Mg²⁺ and Ca²⁺), pH 7.4, 150 mM NaCl, 0.05% Sodium Azide and 40% glycerol

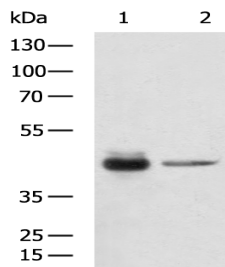
研究领域: Immunology

储存和运输: Store at -20°C. Avoid repeated freezing and thawing



Immunohistochemistry analysis of paraffin embedded Human liver cancer tissue using 219575(ACTR3 Antibody) at a dilution of 1/55(Cytoplasm).

In comparison with the IHC on the left, the same paraffin-embedded Human liver cancer tissue is first treated with the fusion protein and then with 219575(Anti-ACTR3 Antibody) at dilution 1/55.



Gel: 8%SDS-PAGE, Lysate: 40 µg;

Lane 1-2: Hela cell, Mouse brain tissue lysates;

Primary antibody: 219575(ACTR3 Antibody) at dilution 1/800;

Secondary antibody: HRP-conjugated Goat anti rabbit IgG at 1/5000 dilution;

Exposure time: 5 seconds