

ACTR1B RABBIT MAB

货号: N263210

产品全名: ACTR1B 兔单克隆抗体

基因符号 PC3; ARPIB; CTRN2

UNIPROT ID: P42025

背景: Component of a multi-subunit complex involved in microtubule based vesicle motility.

抗原: A synthetic peptide of human ACTR1B

经过测试的应用: WB,IHC-F,IHC-P,ICC/IF,IP

推荐稀释比: WB: 1/500-1/1000 IHC: 1/50-1/100 IF: 1/50-1/200 IP: 1/20

种属反应性: Rabbit

克隆性: Rabbit Monoclonal

克隆编号: R05-1E3

分子量: Calculated MW: 42 kDa; Observed MW: 42 kDa

亚型: IgG

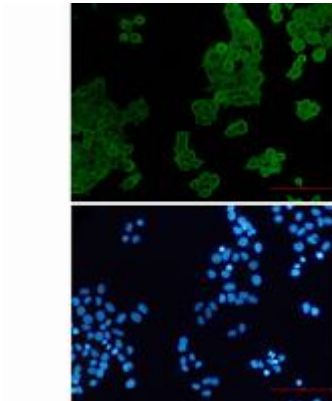
纯化: Affinity Purified

种属反应性: Human

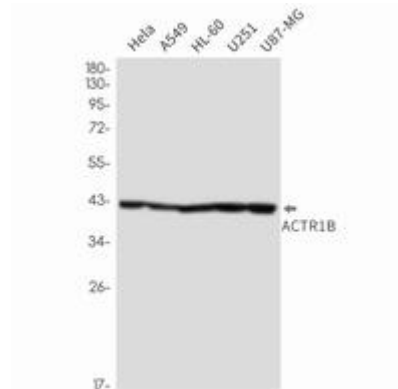
成分: PBS (without Mg²⁺ and Ca²⁺), pH 7.3 containing 50% glycerol, 0.5% BSA and 0.02% sodium azide

研究领域: Signal Transduction

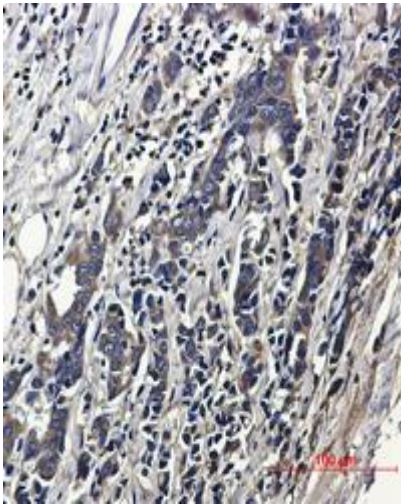
储存和运输: Store at -20°C. Avoid repeated freezing and thawing



Immunocytochemistry analysis of ACTR1B (green) in hela using ACTR1B antibody, and DAPI (blue)



Western blot analysis of ACTR1B in HeLa, A549, HL-60, U251, U87-MG lysates using ACTR1B antibody.



Immunohistochemistry analysis of paraffin-embedded Human breast cancer using ACTR1B antibody. High-pressure and temperature Sodium Citrate pH 6.0 was used for antigen retrieval.