

ACTL6B RABBIT PAB

货号: S219116

产品全名: ACTL6B 兔多抗

基因符号 ACTL6; BAF53B; arpNalpha

UNIPROT ID: O94805 (Gene Accession - BC020944)

背景: The protein encoded by this gene is a member of a family of actin-related proteins (ARPs) which share significant amino acid sequence identity to conventional actins. Both actins and ARPs have an actin fold, which is an ATP-binding cleft, as a common feature. The ARPs are involved in diverse cellular processes, including vesicular transport, spindle orientation, nuclear migration and chromatin remodeling. This gene encodes a subunit of the BAF (BRG1/brm-associated factor) complex in mammals, which is functionally related to SWI/SNF complex in *S. cerevisiae* and *Drosophila*; the latter is thought to facilitate transcriptional activation of specific genes by antagonizing chromatin-mediated transcriptional repression. This subunit may be involved in the regulation of genes by structural modulation of their chromatin, specifically in the brain. Alternative splicing results in multiple transcript variants.

抗原: Fusion protein of human ACTL6B

经过测试的应用: ELISA, WB, IHC

推荐稀释比: IHC: 50-300; WB: 1000-5000; ELISA: 5000-10000

种属反应性: Rabbit

克隆性: Rabbit Polyclonal

亚型: Immunogen-specific rabbit IgG

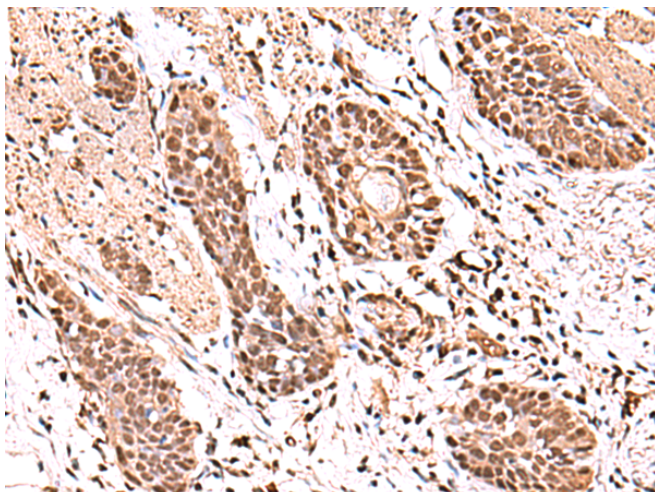
纯化: Antigen affinity purification

种属反应性: Human, Mouse, Rat

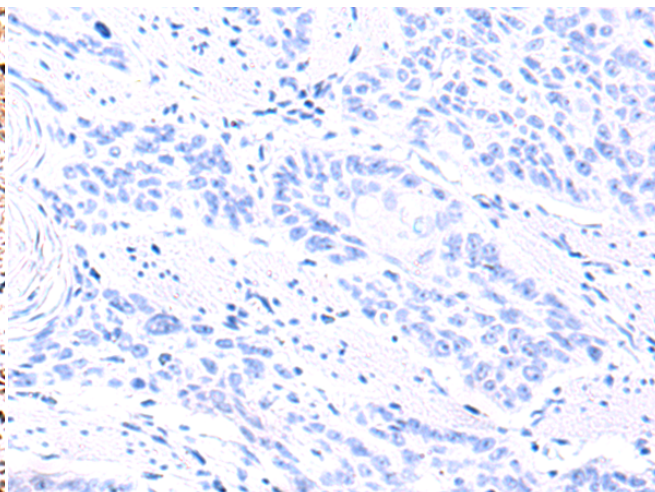
成分: PBS (without Mg²⁺ and Ca²⁺), pH 7.4, 150 mM NaCl, 0.05% Sodium Azide and 40% glycerol

研究领域: Epigenetics and Nuclear Signaling, Neuroscience, Stem Cells

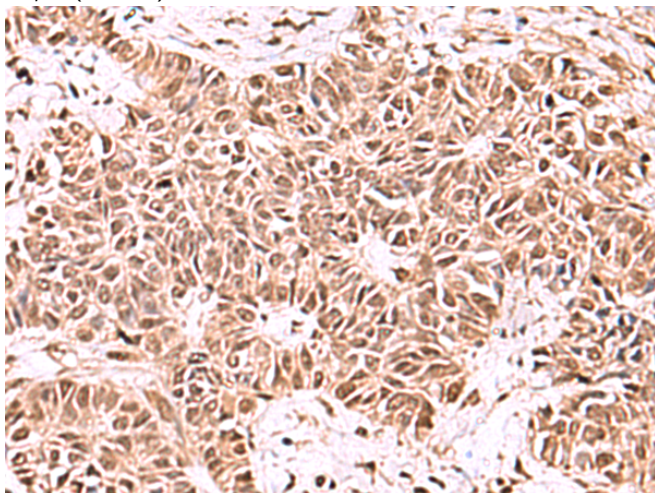
储存和运输: Store at -20°C. Avoid repeated freezing and thawing



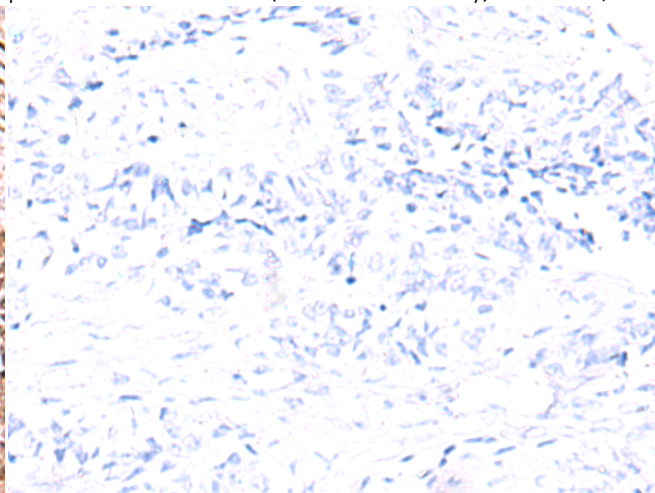
Immunohistochemistry analysis of paraffin embedded Human esophagus cancer tissue using 219116(ACL6B Antibody) at a dilution of 1/100(Nucleus).



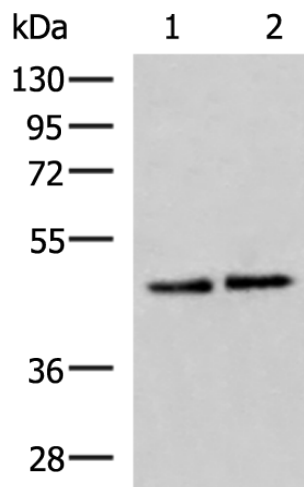
In comparison with the IHC on the left, the same paraffin-embedded Human esophagus cancer tissue is first treated with the fusion protein and then with 219116(Anti-ACL6B Antibody) at dilution 1/100.



The image on the left is immunohistochemistry of paraffin-embedded Human ovarian cancer tissue using 219116(Anti-ACL6B Antibody) at a dilution of 1/100.



In comparison with the IHC on the left, the same paraffin-embedded Human ovarian cancer tissue is first treated with fusion protein and then with D225871(Anti-ACL6B Antibody) at dilution 1/100.



Gel: 8%SDS-PAGE, Lysate: 40 µg;
 Lane 1-2: HeLa and HepG2 cell lysates;
 Primary antibody: 219116(ACL6B Antibody) at dilution 1/1000;
 Secondary antibody: HRP-conjugated Goat anti rabbit IgG at 1/5000 dilution;
 Exposure time: 10 seconds



Product Description

Pioneering GTPase and Oncogene Product Development since 2010
