

## ACTL6A RABBIT MAB

货号: N263209

产品全名: ACTL6A 兔单克隆抗体

基因符号 ACTL6A; BAF53; BAF53A; INO80K; Actin-like protein 6A; 53 kDa  
BRG1-associated factor A; Actin-related protein Baf53a; ArpNbeta; BRG1-  
associated factor 53A; BAF53A; INO80 complex subunit K

**UNIPROT ID:** O96019

背景: Involved in transcriptional activation and repression of select genes by chromatin remodeling (alteration of DNA-nucleosome topology). Required for maximal ATPase activity of SMARCA4/BRG1/BAF190A and for association of the SMARCA4/BRG1/BAF190A containing remodeling complex BAF with chromatin/nuclear matrix.

抗原: A synthetic peptide of human ACTL6A

经过测试的应用: WB, ICC/IF, IP

推荐稀释比: WB: 1/500-1/1000 IF: 1/50-1/200 IP: 1/20

种属反应性: Rabbit

克隆性: Rabbit Monoclonal

克隆编号: R03-1G4

分子量: Calculated MW: 47 kDa; Observed MW: 47 kDa

亚型: IgG

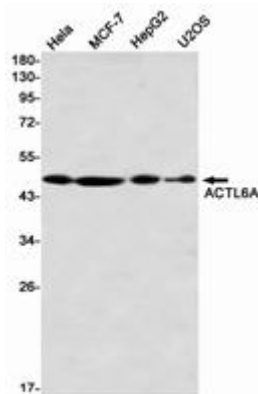
纯化: Affinity Purified

种属反应性: Human

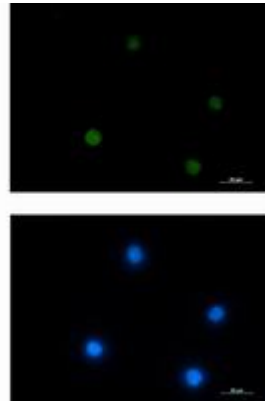
成分: PBS (without Mg<sup>2+</sup> and Ca<sup>2+</sup>), pH 7.3 containing 50% glycerol, 0.5% BSA and 0.02% sodium azide

研究领域: Signal Transduction

储存和运输: Store at -20°C. Avoid repeated freezing and thawing



Western blot analysis of ACTL6A in HeLa, MCF-7, HepG2, U2OS lysates using ACTL6A antibody.



Immunocytochemistry analysis of ACTL6A (green) in Jurkat using ACTL6A antibody, and DAPI (blue).