

ACTIN RELATED PROTEIN 3 RABBIT MAB

货号: N261871

产品全名: Actin Related Protein 3 兔单克隆抗体

基因符号 ACTR3; ARP3; Actin-related protein 3; Actin-like protein 3

UNIPROT ID: P61158

背景: The Arp2/3 complex involved in Golgi polarization in NIH3T3 cells. In a different model it has been shown that the Arp2/3 complex is necessary for neutrophil chemotaxis and phagocytosis.

抗原: A synthetic peptide of human Arp3

经过测试的应用: WB,IHC-F,IHC-P,ICC/IF

推荐稀释比: WB: 1/500-1/1000 IHC: 1/50-1/100 IF: 1/50-1/200

种属反应性: Rabbit

克隆性: Rabbit Monoclonal

克隆编号: R08-2A2

分子量: Calculated MW: 47 kDa; Observed MW: 47 kDa

亚型: IgG

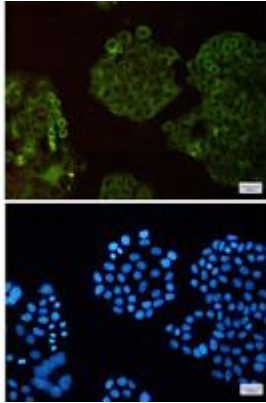
纯化: Affinity Purified

种属反应性: Human, Mouse and Rat

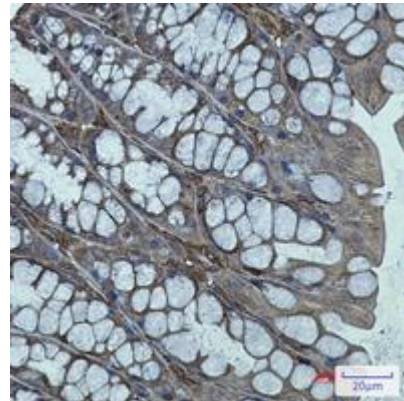
成分: PBS (without Mg²⁺ and Ca²⁺), pH 7.3 containing 50% glycerol, 0.5% BSA and 0.02% sodium azide

研究领域: Immunology

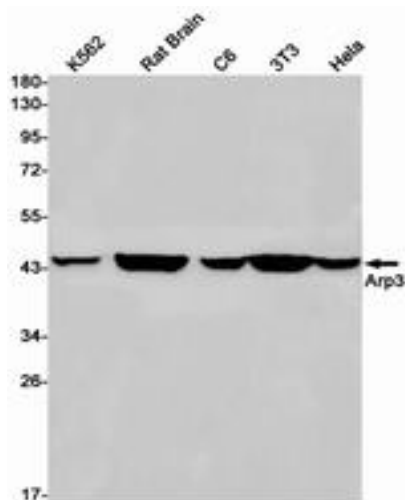
储存和运输: Store at -20°C. Avoid repeated freezing and thawing



Immunocytochemistry analysis of Arp3 (green) in HeLa cells using Arp3 antibody, and DAPI (blue)



Immunohistochemistry analysis of paraffin-embedded mouse colon using Actin Related Protein 3 antibody. High-pressure and temperature Sodium Citrate pH 6.0 was used for antigen retrieval.



Western blot analysis of Arp3 in K562, rat Brain, C6, 3T3, HeLa lysates using Arp3 antibody.