

ACTIN RABBIT PAB

货号: N225023

产品全名: Actin 兔多抗

基因符号 ACTB; Actin; cytoplasmic 1; Beta-actin; POTEKP; ACTBL3; FKSG30; Putative beta-actin-like protein 3; Kappa-actin; POTE ankyrin domain family member K; ACTG1; ACTB; ACTG; Actin; cytoplasmic 2; Gamma-actin

UNIPROT ID: P60709/P63261

背景: beta-Actin is one of six different actin isoforms that have been identified. The actin molecules found in cells of various species and tissues tend to be very similar in their immunological and physical properties. Therefore, Antibodies against beta-Actin are useful as loading controls for Western Blotting. However it should be noted that levels of beta-Actin may not be stable in certain cells. For example, expression of beta-Actin in adipose tissue is very low and therefore it should not be used as loading control for these tissues.

抗原: The antiserum was produced against synthesized peptide derived from human Actin. AA range:326-375

经过测试的应用: WB,IHC-P,ELISA

推荐稀释比: WB: 1/500-1/1000 IHC: 1/50-1/100 ELISA: 1/10000

种属反应性: Rabbit

克隆性: Rabbit Polyclonal

分子量: Calculated MW: 42 kDa; Observed MW: 45 kDa

亚型: IgG

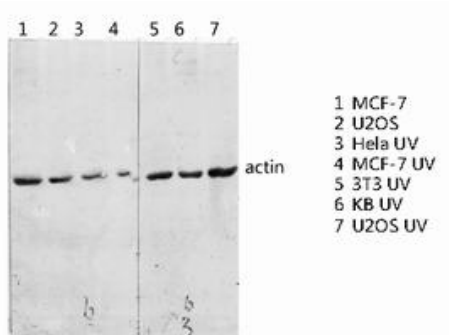
纯化: Affinity Purified

种属反应性: Human, Mouse and Rat

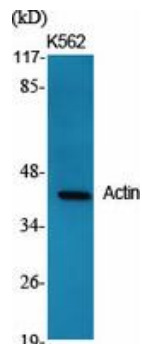
成分: PBS (without Mg²⁺ and Ca²⁺), pH 7.3 containing 50% glycerol, 0.5% BSA and 0.02% sodium azide

研究领域: Cell Biology

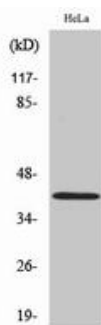
储存和运输: Store at -20°C. Avoid repeated freezing and thawing



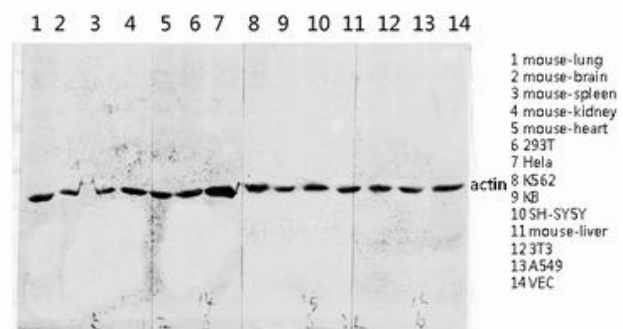
Western blot analysis of Actin in various lysates using Actin antibody.



Western blot analysis of Actin in various lysates using Actin antibody.



Western blot analysis of Actin in HeLa lysates using Actin antibody.



Western blot analysis of Actin in various lysates using Actin antibody.