

## ACTA1 RABBIT PAB

货号: S216988

产品全名: ACTA1 兔多抗

基因符号: ACTA; ASMA; CFTD; MPFD; NEM1; NEM2; NEM3; CFTD1; CFTDM

**UNIPROT ID:** P68133 (Gene Accession - BC012597)

**背景:** The product encoded by this gene belongs to the actin family of proteins, which are highly conserved proteins that play a role in cell motility, structure and integrity. Alpha, beta and gamma actin isoforms have been identified, with alpha actins being a major constituent of the contractile apparatus, while beta and gamma actins are involved in the regulation of cell motility. This actin is an alpha actin that is found in skeletal muscle. Mutations in this gene cause nemaline myopathy type 3, congenital myopathy with excess of thin myofilaments, congenital myopathy with cores, and congenital myopathy with fiber-type disproportion, diseases that lead to muscle fiber defects.

**抗原:** Fusion protein of human ACTA1

**经过测试的应用:** ELISA, WB, IHC

**推荐稀释比:** IHC: 50-200;WB: 500-2000;ELISA: 2000-5000

**种属反应性:** Rabbit

**克隆性:** Rabbit Polyclonal

**亚型:** Immunogen-specific rabbit IgG

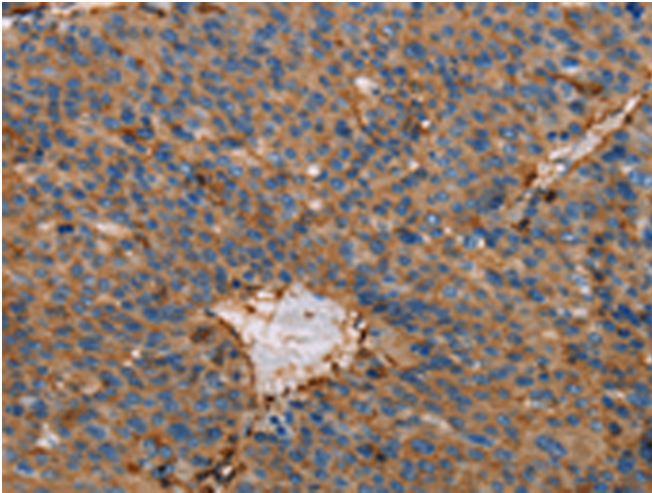
**纯化:** Antigen affinity purification

**种属反应性:** Human, Mouse, Rat

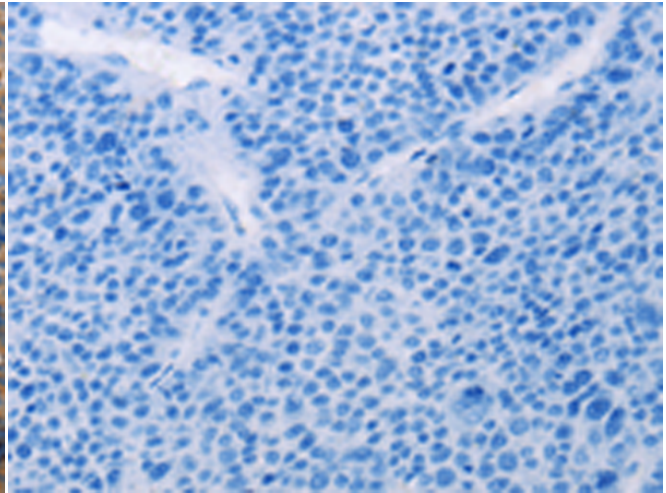
**成分:** PBS (without Mg<sup>2+</sup> and Ca<sup>2+</sup>), pH 7.4, 150 mM NaCl, 0.05% Sodium Azide and 40% glycerol

**研究领域:** Signal Transduction, Cancer

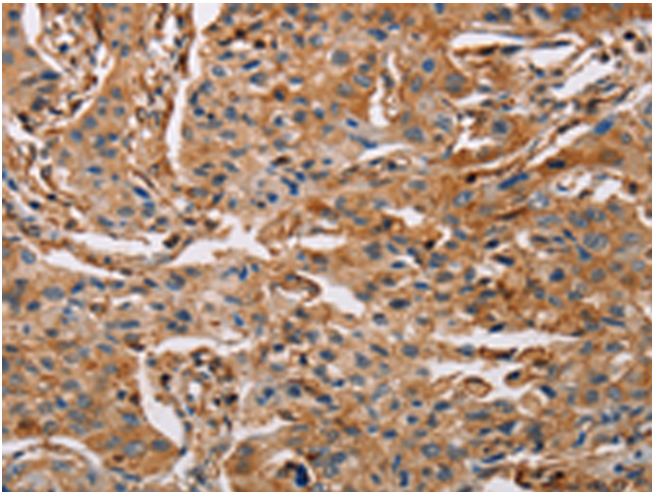
**储存和运输:** Store at -20°C. Avoid repeated freezing and thawing



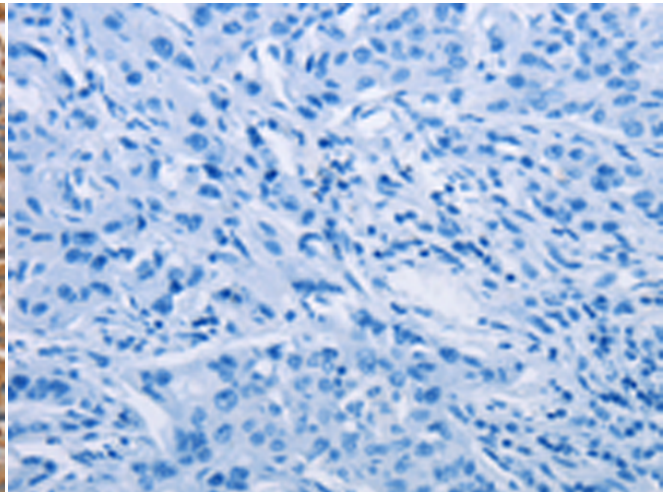
Immunohistochemistry analysis of paraffin embedded Human liver cancer tissue using 216988 (ACTA1 Antibody) at a dilution of 1/65 (Cytoplasm).



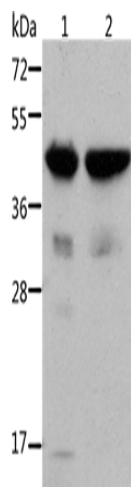
In comparison with the IHC on the left, the same paraffin-embedded Human liver cancer tissue is first treated with the fusion protein and then with 216988 (Anti-ACTA1 Antibody) at dilution 1/65.



The image on the left is immunohistochemistry of paraffin-embedded Human lung cancer tissue using 216988 (Anti-ACTA1 Antibody) at a dilution of 1/65.



In comparison with the IHC on the left, the same paraffin-embedded Human lung cancer tissue is first treated with fusion protein and then with D221592 (Anti-ACTA1 Antibody) at dilution 1/65.



Gel: 10% SDS-PAGE, Lysate: 40 µg;  
Lane 1-2: Mouse muscle tissue, Mouse heart tissue;  
Primary antibody: 216988 (ACTA1 Antibody) at dilution 1/500;  
Secondary antibody: Goat anti rabbit IgG at 1/8000 dilution;  
Exposure time: 20 seconds



# Product Description

Pioneering GTPase and Oncogene Product Development since 2010

---