

ACHR ALPHA1 RABBIT PAB

货号: N225192

产品全名: AChR alpha1 兔多抗

基因符号 CHRNA1; ACHRA; CHNRA; Acetylcholine receptor subunit alpha

UNIPROT ID: P02708

背景: Upon acetylcholine binding, the AChR responds by an extensive change in conformation that affects all subunits and leads to opening of an ion-conducting channel across the plasma membrane.

抗原: The antiserum was produced against synthesized peptide derived from the Internal region of human CHRNA1. AA range:171-220

经过测试的应用: WB,ELISA

推荐稀释比: WB: 1/500-1/1000 ELISA: 1/10000

种属反应性: Rabbit

克隆性: Rabbit Polyclonal

分子量: Calculated MW: 52 kDa; Observed MW: 55 kDa

亚型: IgG

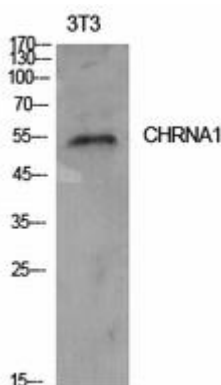
纯化: Affinity Purified

种属反应性: Human, Mouse and Rat

成分: PBS (without Mg²⁺ and Ca²⁺), pH 7.3 containing 50% glycerol, 0.5% BSA and 0.02% sodium azide

研究领域: Neuroscience

储存和运输: Store at -20°C. Avoid repeated freezing and thawing



Western blot analysis of AChR alpha1 in NIH3T3 lysates using AChR alpha1 antibody.