

ACETYL-ALPHA TUBULIN (LYS40) (9B8) MOUSE MAB

货号: N261296

产品全名: Acetyl-Alpha Tubulin (Lys40) (9B8) 小鼠单抗

基因符号 alpha tubulin 2; B alpha 1; H2 alpha; Hum a tub 1; TUBA1; TUBA1A; Tubulin alpha 1chain

UNIPROT ID: P68363

背景: TUBA1A Tubulin is the major constituent of microtubules. It binds two moles of GTP, one at an exchangeable site on the beta chain and one at a non-exchangeable site on the alpha-chain.

抗原: Synthetic peptide conjugated to KLH.

经过测试的应用: WB,IHC-P

推荐稀释比: WB: 1/500-1/1000 IHC: 1/50-1/100

种属反应性: Mouse

克隆性: Mouse Monoclonal

克隆编号: 9B8-3C2-4G7

分子量: Calculated MW: 50 kDa; Observed MW: 50 kDa

亚型: IgG1

纯化: Affinity Purified

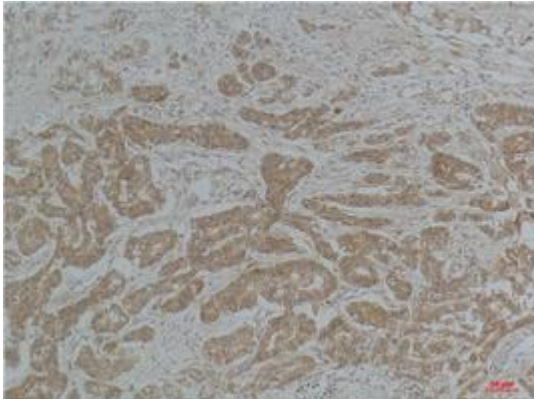
种属反应性: Human,Rat,Mouse

Modification: Acetylated

成分: PBS (without Mg²⁺ and Ca²⁺), pH 7.3 containing 50% glycerol, 0.5% BSA and 0.02% sodium azide

研究领域: Signal Transduction

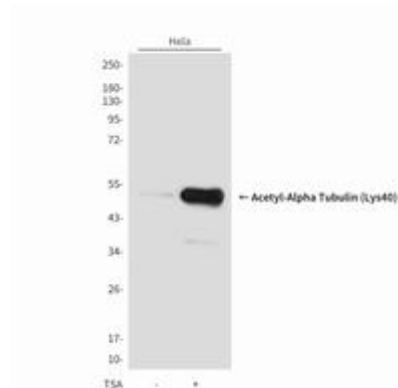
储存和运输: Store at -20°C. Avoid repeated freezing and thawing



Immunohistochemistry analysis of paraffin-embedded Human Breast Carcinoma using α -tubulin(Acetyl Lys40) antibody. High-pressure and temperature Sodium Citrate pH 6.0 was used for antigen retrieval.



Immunohistochemistry analysis of paraffin-embedded mouse Brain Tissue using α -tubulin(Acetyl Lys4) antibody. High-pressure and temperature Sodium Citrate pH 6.0 was used for antigen retrieval.



Western blot analysis of Acetyl-Alpha Tubulin (Lys40) (9B8) in HeLa, untreated or treated with TSA (1 μ M, 18 hr; +), using Acetyl-Alpha Tubulin (Lys40) antibody.