

## ACETYL-ALPHA TUBULIN (LYS40) (6B5) MOUSE MAB

货号: N261389

产品全名: Acetyl-Alpha Tubulin (Lys40) (6B5) 小鼠单抗

基因符号 alpha tubulin 2; B alpha 1; H2 alpha; Hum a tub 1; TUBA1; TUBA1A; Tubulin alpha 1chain

**UNIPROT ID:** P68363

背景: TUBA1A Tubulin is the major constituent of microtubules. It binds two moles of GTP, one at an exchangeable site on the beta chain and one at a non-exchangeable site on the alpha-chain.

抗原: Synthetic peptide conjugated to KLH.

经过测试的应用: WB,IHC-P

推荐稀释比: WB: 1/500-1/1000 IHC: 1/50-1/100

种属反应性: Mouse

克隆性: Mouse Monoclonal

克隆编号: 6B5-1G7-3F9

分子量: Calculated MW: 50 kDa; Observed MW: 50 kDa

亚型: IgG1

纯化: Affinity Purified

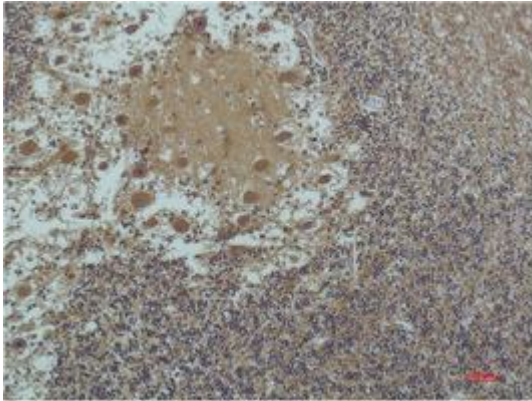
种属反应性: Human,Rat,Mouse

**Modification:** Acetylated

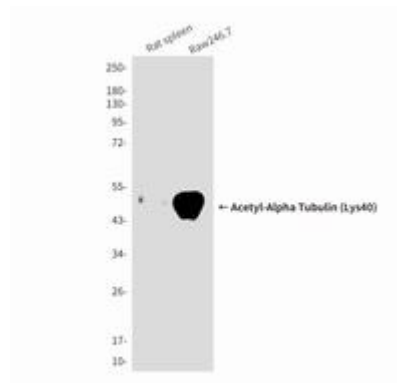
成分: PBS (without Mg<sup>2+</sup> and Ca<sup>2+</sup>), pH 7.3 containing 50% glycerol, 0.5% BSA and 0.02% sodium azide

研究领域: Signal Transduction

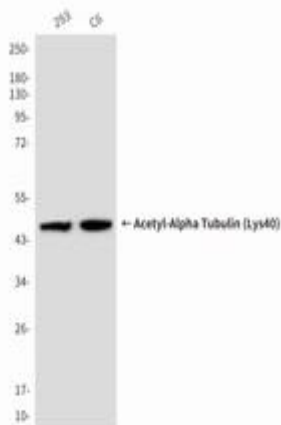
储存和运输: Store at -20°C. Avoid repeated freezing and thawing



Immunohistochemistry analysis of paraffin-embedded Human Brain Tissue using  $\alpha$ -tubulin (Acetyl Lys4) antibody. High-pressure and temperature Sodium Citrate pH 6.0 was used for antigen retrieval.



Western blot analysis of Acetyl- $\alpha$ -Tubulin (Lys40) in rat spleen, Raw246.7 lysates using Acetyl- $\alpha$ -Tubulin (Lys40) (6B5) antibody.



Western blot analysis of Acetyl-Alpha Tubulin (Lys40) (6B5) in 293, C6 lysates using Acetyl- $\alpha$ -Tubulin (Lys40) (6B5) antibody.