

ACAP1 RABBIT PAB

货号: S218469

产品全名: ACAP1 兔多抗

基因符号: CENTB1

UNIPROT ID: Q15027 (Gene Accession - BC018543)

背景: ACAP1, also designated Centaurin- β 1 (CENTB1 or Cnt- β 1), is a member of the ADP ribosylation factor family of ARF6 GTPase-activating proteins (GAP). GAPs are important regulators of Arf function by controlling the return of ARF to its inactive state. ACAP1 is related to AGAP1 and ASAP1, and all three proteins are similarly expressed in fibroblast cells such as NIH/3T3. Internalization and recycling of integrin receptors is important in cell adhesion and migration modulation, and once inside a cell, proteins and membranes are transported to the endosome where they are sorted for recycling or degradation. ACAP1 promotes cargo sorting by associating directly to recycling cargo proteins. Preventing this interaction inhibits protein recycling. ACAP1 binds transferrin receptors, promoting their transport to the plasma membrane from the endosome. Akt induced phosphorylation of ACAP1 at Ser 554 regulates ACAP1 interaction to integrin in endosomes, and downregulation of Akt or ACAP1 may inhibit cell migration on Fibronectin.

抗原: Fusion protein of human ACAP1

经过测试的应用: ELISA, WB, IHC

推荐稀释比: IHC: 25-100;WB: 200-1000;ELISA: 5000-10000

种属反应性: Rabbit

克隆性: Rabbit Polyclonal

亚型: Immunogen-specific rabbit IgG

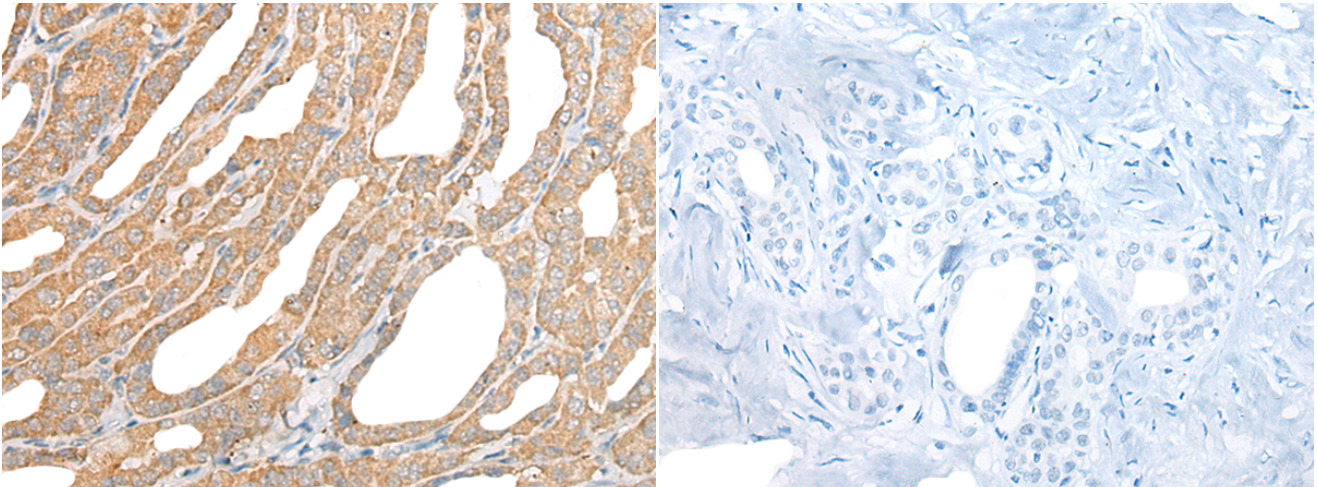
纯化: Antigen affinity purification

种属反应性: Human, Mouse

成分: PBS (without Mg²⁺ and Ca²⁺), pH 7.4, 150 mM NaCl, 0.05% Sodium Azide and 40% glycerol

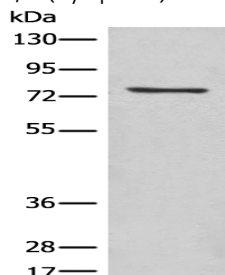
研究领域: Signal Transduction

储存和运输: Store at -20°C. Avoid repeated freezing and thawing



Immunohistochemistry analysis of paraffin embedded Human thyroid cancer tissue using 218469(ACAP1 Antibody) at a dilution of 1/25(Cytoplasm).

In comparison with the IHC on the left, the same paraffin-embedded Human thyroid cancer tissue is first treated with the fusion protein and then with 218469(Anti-ACAP1 Antibody) at dilution 1/25.



Gel: 6%SDS-PAGE, Lysate: 40 μ g;

Lane: Mouse lung tissue lysate;

Primary antibody: 218469(ACAP1 Antibody) at dilution 1/450;

Secondary antibody: Goat anti rabbit IgG at 1/8000 dilution;

Exposure time: 1 minute



Product Description

Pioneering GTPase and Oncogene Product Development since 2010
