

ABI2 RABBIT PAB

货号: S216903

产品全名: ABI2 兔多抗

基因符号: AIP1; ABI-2; ABI2B; AIP-1; AblBP3; argBP1; SSH3BP2; argBP1A; argBP1B

UNIPROT ID: Q9NYB9 (Gene Accession - BC001439)

背景: May act in regulation of cell growth and transformation by interacting with nonreceptor tyrosine kinases ABL1 and/or ABL2. Part of the WAVE complex that regulates lamellipodia formation. The WAVE complex regulates actin filament reorganization via its interaction with the Arp2/3 complex. Regulates ABL1/c-Abl-mediated phosphorylation of MENA. As component of the WAVE1 complex required for BDNF-NTRK2 endocytic trafficking and signaling from early endosomes.

抗原: Fusion protein of human ABI2

经过测试的应用: ELISA, IHC

推荐稀释比: IHC: 50-100; ELISA: 5000-10000

种属反应性: Rabbit

克隆性: Rabbit Polyclonal

亚型: Immunogen-specific rabbit IgG

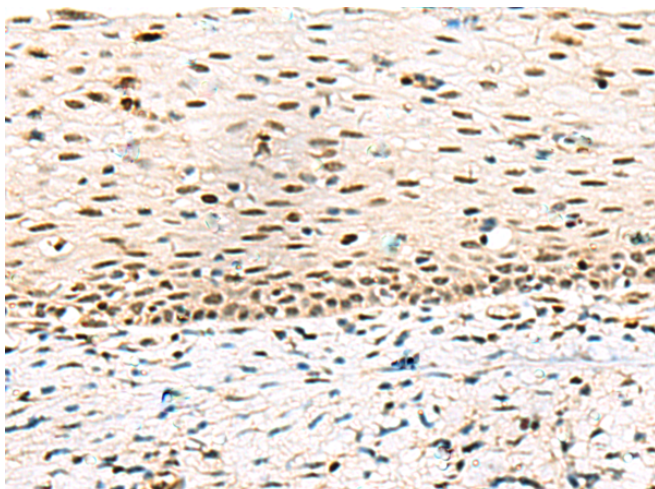
纯化: Antigen affinity purification

种属反应性: Human

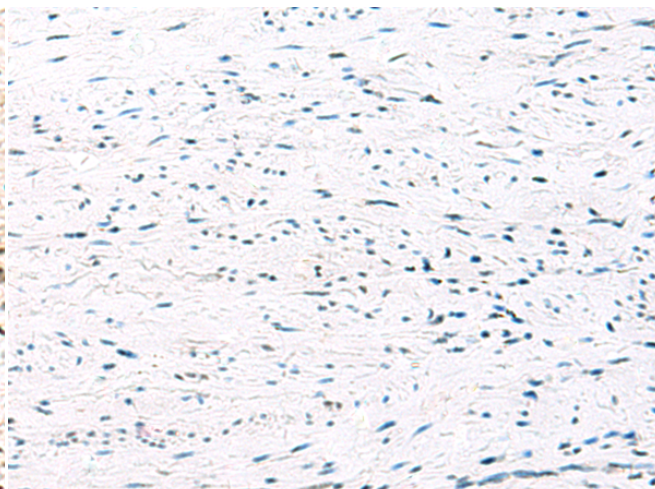
成分: PBS (without Mg²⁺ and Ca²⁺), pH 7.4, 150 mM NaCl, 0.05% Sodium Azide and 40% glycerol

研究领域: Cancer

储存和运输: Store at -20°C. Avoid repeated freezing and thawing



Immunohistochemistry analysis of paraffin embedded Human cervical cancer tissue using 216903 (ABI2 Antibody) at a dilution of 1/45 (Nucleus).



In comparison with the IHC on the left, the same paraffin-embedded Human cervical cancer tissue is first treated with the fusion protein and then with 216903 (Anti-ABI2 Antibody) at dilution 1/45.