

ABHD14B RABBIT PAB

货号: S218170

产品全名: ABHD14B 兔多抗

基因符号: CIB; HEL-S-299

UNIPROT ID: Q96IU4 (Gene Accession - BC007234)

背景: ABHD14B is a 210 amino acid protein that localizes to both the cytoplasm and the nucleus where it exists as two alternatively spliced isoforms. Has hydrolase activity towards p-nitrophenyl butyrate (in vitro). May activate transcription.

抗原: Full length fusion 蛋白

经过测试的应用: ELISA, WB, IHC

推荐稀释比: IHC: 25-100;WB: 500-2000;ELISA: 5000-10000

种属反应性: Rabbit

克隆性: Rabbit Polyclonal

亚型: Immunogen-specific rabbit IgG

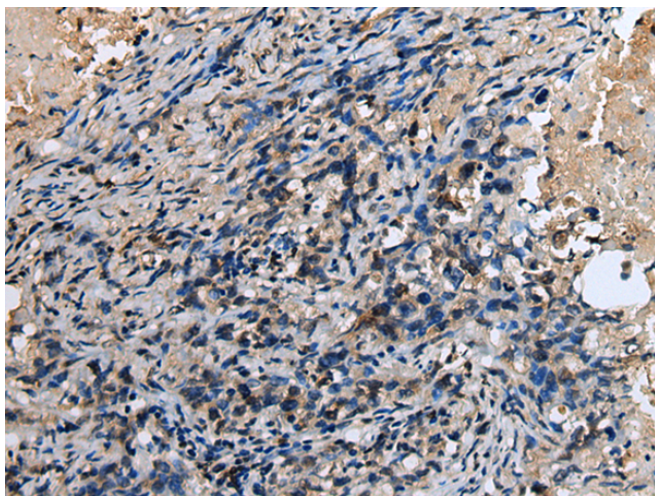
纯化: Antigen affinity purification

种属反应性: Human, Mouse, Rat

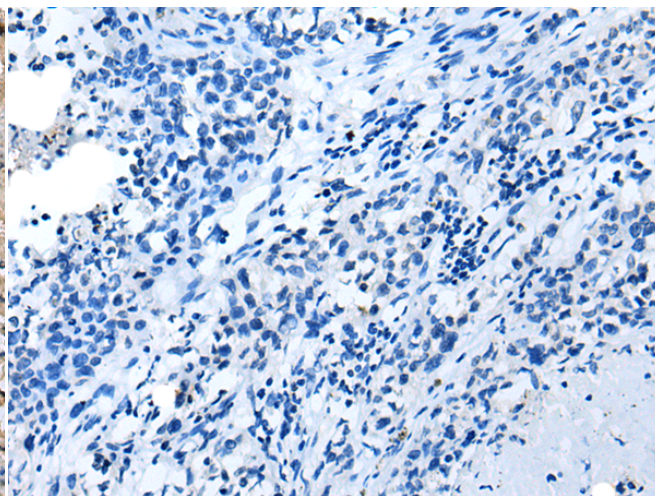
成分: PBS (without Mg²⁺ and Ca²⁺), pH 7.4, 150 mM NaCl, 0.05% Sodium Azide and 40% glycerol

研究领域: Cell Biology

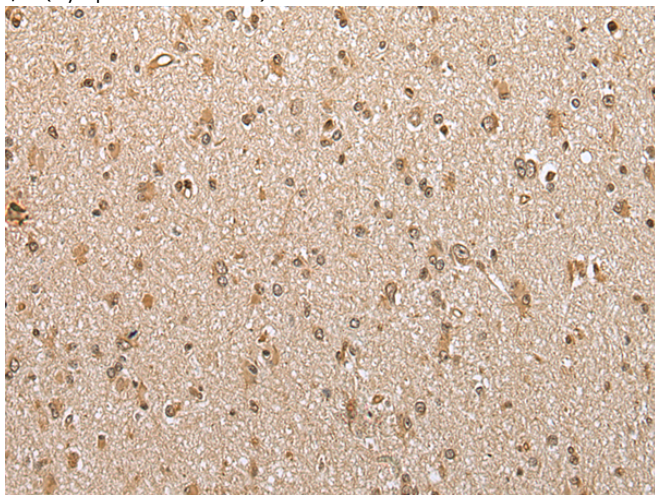
储存和运输: Store at -20°C. Avoid repeated freezing and thawing



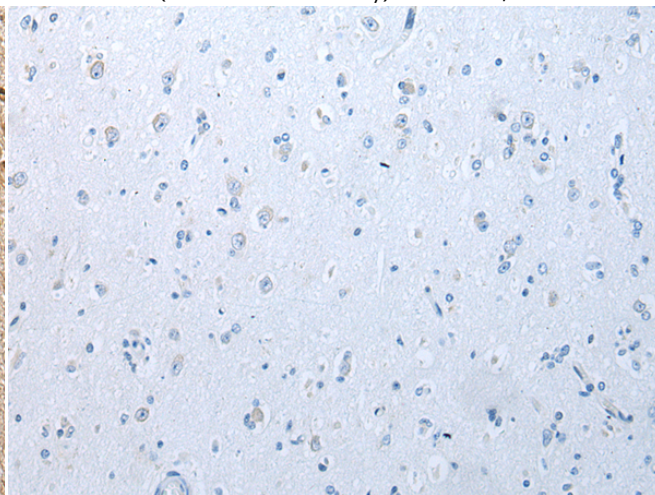
Immunohistochemistry analysis of paraffin embedded Human lung cancer tissue using 218170 (ABHD14B Antibody) at a dilution of 1/30 (Cytoplasm or Nucleus).



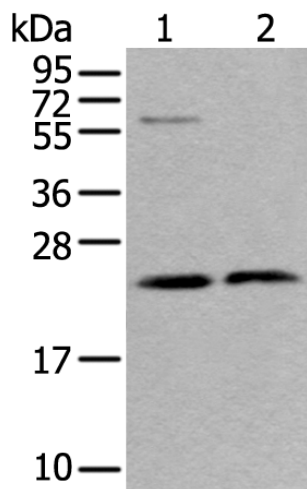
In comparison with the IHC on the left, the same paraffin-embedded Human lung cancer tissue is first treated with the fusion protein and then with 218170 (Anti-ABHD14B Antibody) at dilution 1/30.



The image on the left is immunohistochemistry of paraffin-embedded Human brain tissue using 218170 (Anti-ABHD14B Antibody) at a dilution of 1/30.



In comparison with the IHC on the left, the same paraffin-embedded Human brain tissue is first treated with fusion protein and then with D223870 (Anti-ABHD14B Antibody) at dilution 1/30.



Gel: 12%SDS-PAGE, Lysate: 40 µg;
Lane 1-2: LO2 cell and Human testis tissue lysates;
Primary antibody: 218170 (ABHD14B Antibody) at dilution 1/350;
Secondary antibody: Goat anti rabbit IgG at 1/8000 dilution;
Exposure time: 30 seconds



Product Description

Pioneering GTPase and Oncogene Product Development since 2010
