

ABCG1 RABBIT PAB

货号: S213780

产品全名: ABCG1 兔多抗

基因符号: ABCG1; WHITE1

UNIPROT ID: P45844 (Gene Accession - NP_004906)

背景: The protein encoded by this gene is a member of the superfamily of ATP-binding cassette (ABC) transporters. ABC proteins transport various molecules across extra- and intra-cellular membranes. ABC genes are divided into seven distinct subfamilies (ABCI, MDR/TAP, MRP, ALD, OABP, GCN20, White). This protein is a member of the White subfamily. It is involved in macrophage cholesterol and phospholipids transport, and may regulate cellular lipid homeostasis in other cell types. Six alternative splice variants have been identified.

抗原: Synthetic peptide of human ABCG1

经过测试的应用: ELISA, WB, IHC

推荐稀释比: IHC: 25-100;WB: 500-2000;ELISA: 2000-5000

种属反应性: Rabbit

克隆性: Rabbit Polyclonal

亚型: Immunogen-specific rabbit IgG

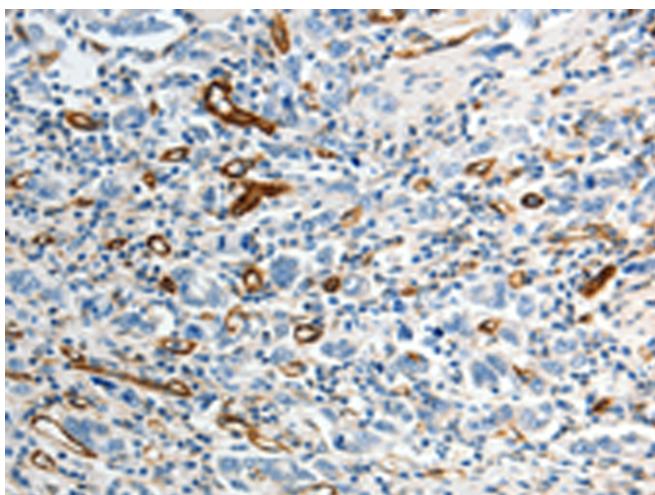
纯化: Antigen affinity purification

种属反应性: Human

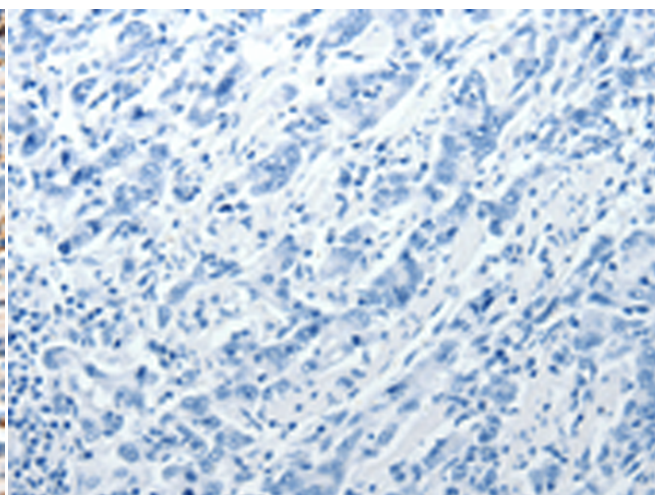
成分: PBS (without Mg2+ and Ca2+), pH 7.4, 150 mM NaCl, 0.05% Sodium Azide and 40% glycerol

研究领域: Metabolism, Cancer, Neuroscience, Cardiovascular

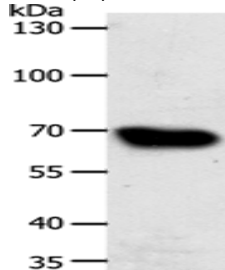
储存和运输: Store at -20°C. Avoid repeated freezing and thawing



Immunohistochemistry analysis of paraffin embedded Human gastric cancer tissue using 213780 (ABCG1 Antibody) at a dilution of 1/40 (Cytoplasm).



In comparison with the IHC on the left, the same paraffin-embedded Human gastric cancer tissue is first treated with the synthetic peptide and then with 213780 (Anti-ABCG1 Antibody) at dilution 1/40.



Gel: 10%SDS-PAGE, Lysate: 40 µg;

Lane: HT29 cells;

Primary antibody: 213780 (ABCG1 Antibody) at dilution 1/500;

Secondary antibody: Goat anti rabbit IgG at 1/8000 dilution;

Exposure time: 2 minutes