

ABCE1 RABBIT MAB

货号: N261609

产品全名: ABCE1 兔单克隆抗体

基因符号 ABC38; ABCE1; HuHP68; OABP; RLI; RNASEL1; RNASEL2; RNS4I

UNIPROT ID: P61221

背景: Antagonizes the binding of 2-5A (5'-phosphorylated 2',5'-linked oligoadenylates) by RNase L through direct interaction with RNase L and therefore inhibits its endoribonuclease activity.

抗原: A synthetic peptide of human ABCE1

经过测试的应用: WB,IP

推荐稀释比: WB: 1/500-1/1000 IP: 1/20

种属反应性: Rabbit

克隆性: Rabbit Monoclonal

克隆编号: R09-8C3

分子量: Calculated MW: 67 kDa; Observed MW: 67 kDa

亚型: IgG

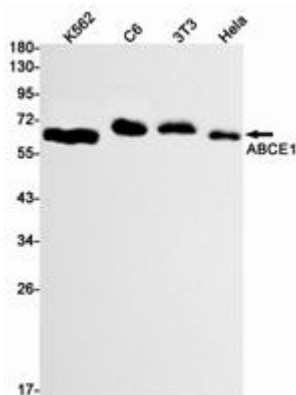
纯化: Affinity Purified

种属反应性: Human, Mouse and Rat

成分: PBS (without Mg²⁺ and Ca²⁺), pH 7.3 containing 50% glycerol, 0.5% BSA and 0.02% sodium azide

研究领域: Signal Transduction

储存和运输: Store at -20°C. Avoid repeated freezing and thawing



Western blot analysis of ABCE1 in K562, C6, 3T3, HeLa lysates using ABCE1 antibody.