

AARS1 RABBIT PAB

货号: S220279

产品全名: AARS1 兔多抗

基因符号: AARS; CMT2N; EIEE29

UNIPROT ID: P49588 (Gene Accession - NP_001596)

背景: The human alanyl-tRNA synthetase (AARS) belongs to a family of tRNA synthetases, of the class II enzymes. Class II tRNA synthetases evolved early in evolution and are highly conserved. This is reflected by the fact that 498 of the 968-residue polypeptide human AARS shares 41% identity with the E.coli protein. tRNA synthetases are the enzymes that interpret the RNA code and attach specific aminoacids to the tRNAs that contain the cognate trinucleotide anticodons. They consist of a catalytic domain which interacts with the amino acid acceptor-T psi C helix of the tRNA, and a second domain which interacts with the rest of the tRNA structure. [provided by RefSeq, Jul 2008]

抗原: Synthetic peptide of human AARS1

经过测试的应用: ELISA, IHC

推荐稀释比: IHC: 50-200; ELISA: 2000-5000

种属反应性: Rabbit

克隆性: Rabbit Polyclonal

亚型: Immunogen-specific rabbit IgG

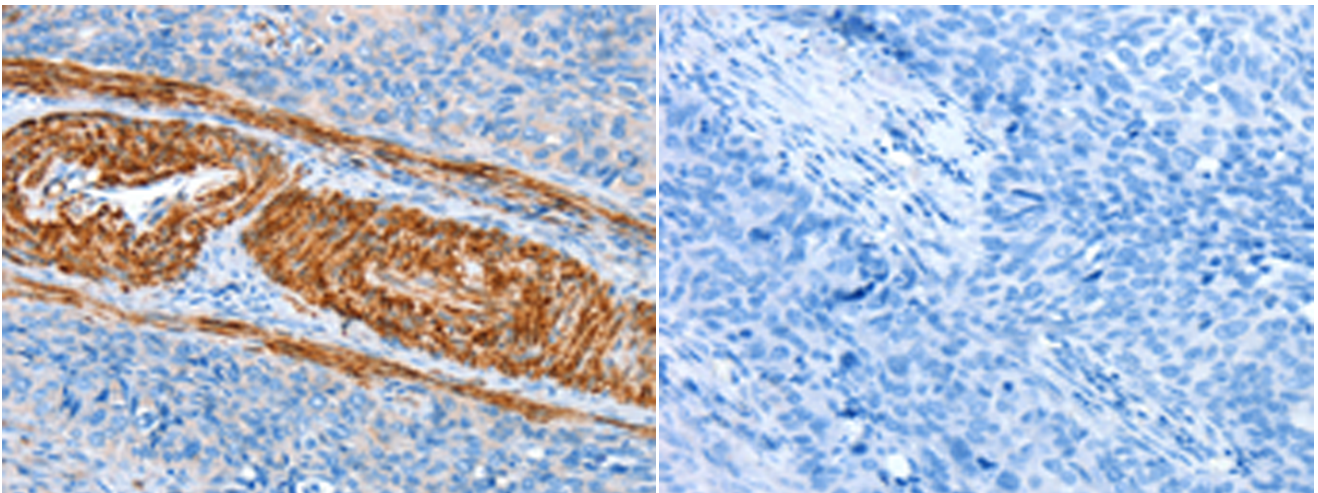
纯化: Antigen affinity purification

种属反应性: Human, Rat

成分: PBS (without Mg²⁺ and Ca²⁺), pH 7.4, 150 mM NaCl, 0.05% Sodium Azide and 40% glycerol

研究领域: Epigenetics and Nuclear Signaling

储存和运输: Store at -20°C. Avoid repeated freezing and thawing



Immunohistochemistry analysis of paraffin embedded Human cervical cancer tissue using 220279(AARS1 Antibody) at a dilution of 1/60(Cytoplasm).

In comparison with the IHC on the left, the same paraffin-embedded Human cervical cancer tissue is first treated with the synthetic peptide and then with 220279(Anti-AARS1 Antibody) at dilution 1/60.