

## A1BG RABBIT PAB

货号: N225012

产品全名: A1BG 兔多抗

基因符号 A1BG; Alpha-1B-glycoprotein; Alpha-1-B glyco蛋白

**UNIPROT ID:** P04217

**背景:** A1BG is a plasma glycoprotein of unknown function. It shows sequence similarity to the variable regions of some immunoglobulin supergene family member proteins. A1BG was recently shown to bind cysteine rich secretory protein 3 (CRISP 3) with high affinity, and it has been suggested that A1BG protects against the potentially toxic effects of CRISP 3 in the circulation.

**抗原:** Synthesized peptide derived from A1BG . at AA range: 100-180

**经过测试的应用:** WB, IHC-P, ELISA

**推荐稀释比:** WB: 1/500-1/1000 IHC: 1/50-1/100 ELISA: 1/10000

**种属反应性:** Rabbit

**克隆性:** Rabbit Polyclonal

**分子量:** Calculated MW: 54 kDa; Observed MW: 28 kDa

**亚型:** IgG

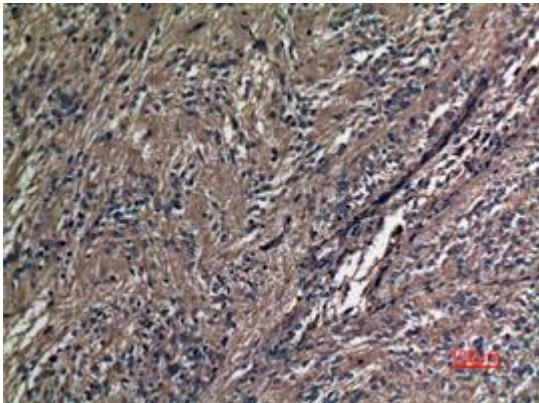
**纯化:** Affinity Purified

**种属反应性:** Human

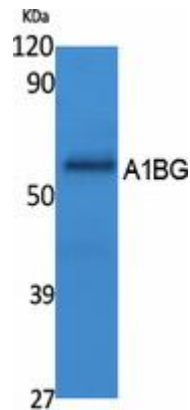
**成分:** PBS (without Mg<sup>2+</sup> and Ca<sup>2+</sup>), pH 7.3 containing 50% glycerol, 0.5% BSA and 0.02% sodium azide

**研究领域:** Cell Biology

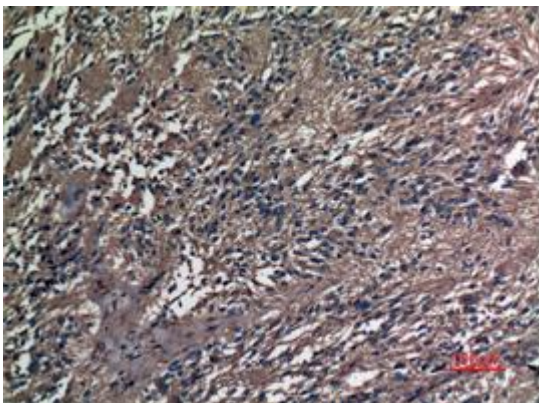
**储存和运输:** Store at -20°C. Avoid repeated freezing and thawing



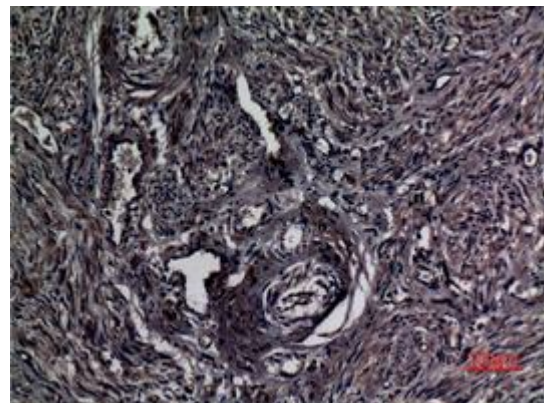
Immunohistochemistry analysis of paraffin-embedded Human ovary using A1BG antibody. High-pressure and temperature Sodium Citrate pH 6.0 was used for antigen retrieval.



Western blot analysis of A1BG in Sodium K562 lysates using A1BG antibody.



Immunohistochemistry analysis of paraffin-embedded Human ovary using A1BG antibody. High-pressure and temperature Sodium Citrate pH 6.0 was used for antigen retrieval.



Immunohistochemistry analysis of paraffin-embedded Human uterus using A1BG antibody. High-pressure and temperature Sodium Citrate pH 6.0 was used for antigen retrieval.