

## 14-3-3 THETA RABBIT PAB

货号: N225736

产品全名: 14-3-3 theta 兔多抗

基因符号 YWHAQ; 14-3-3 protein theta; 14-3-3 protein T-cell; 14-3-3 protein tau; Protein HSI

**UNIPROT ID:** P27348

**背景:** Adapter protein implicated in the regulation of a large spectrum of both general and specialized signaling pathways. Binds to a large number of partners, usually by recognition of a phosphoserine or phosphothreonine motif. Binding generally results in the modulation of the activity of the binding partner.

**抗原:** A synthesized peptide derived from human 14-3-3 Theta

**经过测试的应用:** WB, ICC/IF, FC

**推荐稀释比:** WB: 1/500-1/1000 IF: 1/50-1/200 FC: 1/50-1/100

**种属反应性:** Rabbit

**克隆性:** Rabbit Polyclonal

**分子量:** Calculated MW: 28 kDa; Observed MW: 28 kDa

**亚型:** IgG

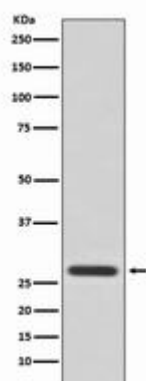
**纯化:** Affinity Chromatography

**种属反应性:** Human, Mouse and Rat

**成分:** PBS (without Mg<sup>2+</sup> and Ca<sup>2+</sup>), pH 7.3 containing 50% glycerol, 0.5% BSA and 0.02% sodium azide

**研究领域:** Neuroscience

**储存和运输:** Store at -20°C. Avoid repeated freezing and thawing



Western blot analysis of 14-3-3 Theta in HeLa lysates using 14-3-3 theta antibody.



# Product Description

Pioneering GTPase and Oncogene Product Development since 2010

---