

14-3-3 ALPHA/BETA RABBIT MAB

货号: N263201

产品全名: 14-3-3 alpha/beta 兔单克隆抗体

基因符号 YWHAB; 14-3-3 protein beta/alpha; Protein 1054; Protein kinase C inhibitor protein 1; KCIP-1

UNIPROT ID: P31946

背景: Adapter protein implicated in the regulation of a large spectrum of both general and specialized signaling pathways. Binds to a large number of partners, usually by recognition of a phosphoserine or phosphothreonine motif. Binding generally results in the modulation of the activity of the binding partner. Negative regulator of osteogenesis.

抗原: A synthetic peptide of human 14-3-3 alpha/beta

经过测试的应用: WB,IHC-P,IP

推荐稀释比: WB: 1/500-1/1000 IHC: 1/50-1/100 IP: 1/20

种属反应性: Rabbit

克隆性: Rabbit Monoclonal

克隆编号: R08-4A7

分子量: Calculated MW: 28 kDa; Observed MW: 28 kDa

亚型: IgG

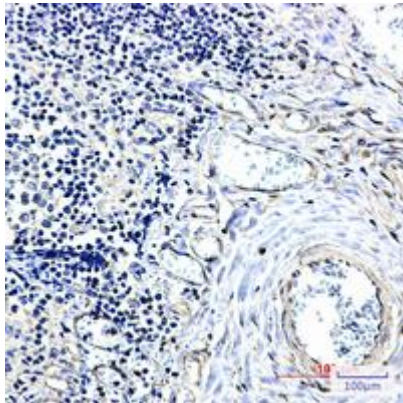
纯化: Affinity Purified

种属反应性: Human, Mouse and Rat

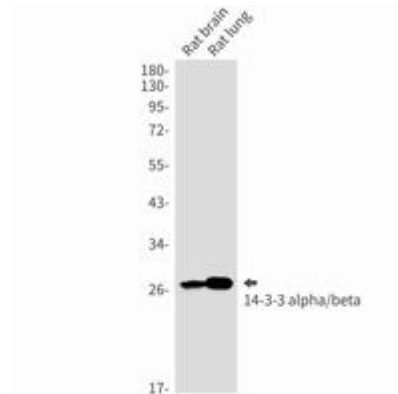
成分: PBS (without Mg²⁺ and Ca²⁺), pH 7.3 containing 50% glycerol, 0.5% BSA and 0.02% sodium azide

研究领域: Neuroscience

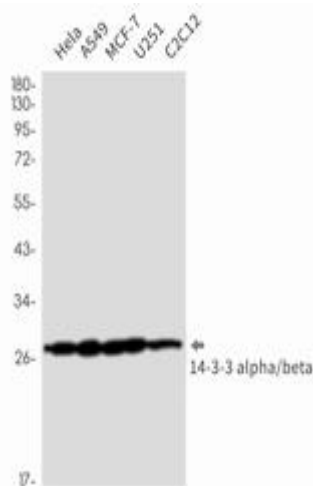
储存和运输: Store at -20°C. Avoid repeated freezing and thawing



Immunohistochemistry analysis of paraffin-embedded Human tonsil using 14-3-3 alpha/beta antibody. High-pressure and temperature Sodium Citrate pH 6.0 was used for antigen retrieval.



Western blot analysis of 14-3-3 alpha/beta in rat brain, rat lung lysates using 14-3-3 alpha/beta antibody.



Western blot analysis of 14-3-3 alpha/beta in HeLa, A549, MCF-7, U251, C2C12 lysates using 14-3-3 alpha/beta antibody.