

ADGRE1 (DMC481) IGG1 CHIMERIC MAB

货号: 28257

产品全名: ADGRE1(DMC481) IgG1 Chimeric 单抗

基因符号 EMRI; TM7LN3

描述: ADGRE1 antibody(DMC481) IgG1 Chimeric 单抗

背景: This gene encodes a protein that has a domain resembling seven transmembrane G protein-coupled hormone receptors (7TM receptors) at its C-terminus. The N-terminus of the encoded protein has six EGF-like modules; separated from the transmembrane segments by a serine:threonine-rich domain; a feature reminiscent of mucin-like; single-span; integral membrane glycoproteins with adhesive properties. Multiple alternatively spliced transcript variants encoding different isoforms have been found for this gene. [provided by RefSeq; Jan 2012]

经过测试的应用: Flow Cyt

推荐稀释比: Flow Cyt 1:100

种属反应性: Rabbit

亚型: Rabbit:Human Fc chimeric IgG1

纯化: Purified from cell culture supernatant by affinity chromatography

种属反应性: 人 ADGRE1

成分: Lyophilized from sterile PBS, pH 7.4. 5 % – 8% trehalose is added as protectants before lyophilization.

储存和运输: Store at -20°C to -80°C for 12 months in lyophilized form.

After reconstitution, if not intended for use within a month, aliquot and store at -80°C (Avoid repeated freezing and thawing).

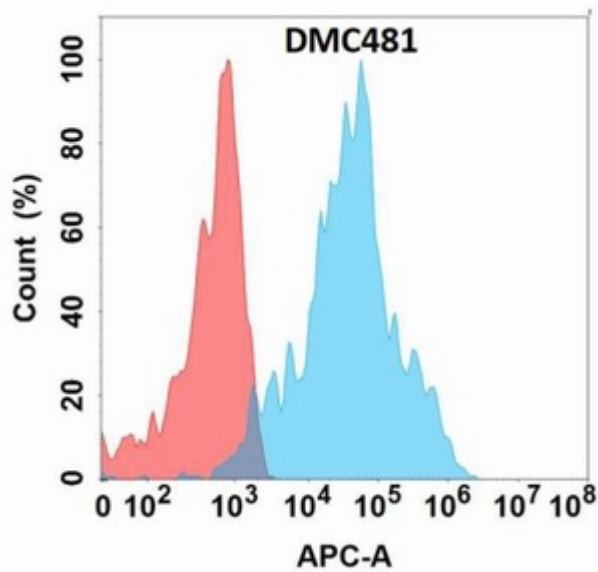


Figure 1. Flow cytometry analysis with Anti-ADGRE1 (DMC481) on Expi293 cells transfected with human ADGRE1 (Blue histogram) or Expi293 transfected with irrelevant protein (Red histogram).